



Full Accessories Catalogue

For Passenger Cars





Sport and Design 07



Alloy wheels and complete wheels 17



Communication 31

Volkswagen Accessories. 100% Volkswagen.

Every single Volkswagen Genuine Accessories product is developed in parallel with the vehicle itself, and manufactured from high-quality materials using state-of-the-art production processes.

We carry out strict safety tests on many accessories, some exceeding the legally required standards.

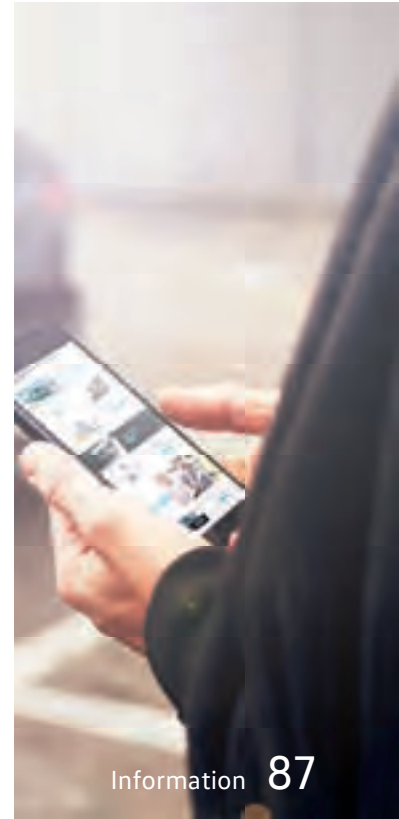
So that you stay satisfied – and your Volkswagen stays a Volkswagen.



Transport 41



Comfort and Protection 63



Information 87

Product characteristic pictograms.

Products from Volkswagen Accessories have many unique characteristics. These pictograms indicate particularly interesting features.



Tool-free installation



Load capacity



Environmentally friendly



Can be used in various models



New product feature



Volkswagen City Crash test



Recyclable

The vehicles shown in this brochure are occasionally pictured with additional accessories and/or optional equipment. These are not included with the product described. This also applies to any decorative elements shown.

Volkswagen. Accessories.

Dive into the world of Volkswagen Accessories. From unique accessories for your specific Volkswagen model and general accessories solutions through to attractive lifestyle articles: Discover the full range in the Volkswagen vehicle catalogues, in this Full Accessories Catalogue and in our Full Lifestyle Catalogue. You can also explore our products online on the Volkswagen website.



Illustration shows: Pretoria wheel page 20, roof bars page 45, cross bars page 45, ski and snowboard carrier page 46, bicycle carrier page 47, roof box page 48.



Vehicle-Specific Accessories

Add an extra special touch to your vehicle: in the **Volkswagen vehicle catalogues**, you will find our range of tailored aerodynamic and design solutions, as well as other individual accessories for your specific vehicle model.



Universal Accessories

From tail silencer trims, alloy wheels, communication and transport products to practical solutions for added comfort and protection: You can find all of our universal accessories in the easy-to-follow sections of this **Full Accessories Catalogue**. Tables at the end of each chapter quickly show you which products are available for your vehicle.



Lifestyle and Model Cars

For an individual touch: there's something for everyone in our **Full Lifestyle Catalogue** – from stylish clothing to elegant accessories. Browse through our collections at your own leisure and be inspired. And we want to get collectors' hearts racing, too: our **Model Car Catalogue** is full of precisely detailed, original miniatures for many Volkswagen models.



! NOTE

All catalogues can be found at your trusted Volkswagen dealership. Or online at: volkswagen.de



Illustration shows: Twinspoke wheel, page 21.

Turbo-charged driving pleasure just the way I like it.

"I love it when my Volkswagen's appearance hints at what it is capable of. Power, dynamism and sportiness, as far as the eye can see. All that looks pretty impressive – but most of all it makes driving even more fun. A genuine pleasure. Both."

→ **Want a sportier look?**

Add an extra special touch to your Volkswagen: The **Volkswagen vehicle catalogues** contain a range of tailored aerodynamic and design solutions, and individual accessories for each vehicle model.

01/02/03/04/05 Volkswagen Genuine LED tail light clusters: Sportiness down to the finest detail: Whether you go for the R-look tinted LED tail light clusters for the Golf or the R-Line LED tail light clusters for the Passat Estate that can be simply replaced and/or retrofitted to your vehicle. The semi-tinted Golf LED tail light clusters with animated turn signals have a particularly eye-catching effect. The "Black Line" Polo LED tail light cluster in an exclusive tinted design provides a particularly sporty note.



01



! NOTE

See the overview of the availability of products for your Volkswagen on page 14.



- 01 LED tail light clusters with animated turn signal for the Golf (from model year 2017)
- 02 "Black Line" LED tail light clusters for the Polo
- 03 "Black Line" LED tail light clusters for the T-Roc
- 04 LED tail light clusters in R-look for the Golf (from model year 2013)
- 05 LED tail light clusters with dynamic turn signals in an R-Line look for the Passat Estate with a Coming and Leaving Home Function (from model year 2019)



01

01 Volkswagen Genuine dynamic turn signals: Light up the road – with the dynamic exterior mirror turn signals for the Golf, Golf Estate and Golf Sportsvan. The turn signals feature innovative, long-lasting LED technology and help to warn other road users when you are about to turn thanks to the running light effect. The tinted glass adds a sporty look to the turn signals and enhance your vehicle's appearance. Easy to install thanks to plug & play design!

02/03/04 Volkswagen Genuine exterior mirror caps: Extraordinary: With these R-look caps for the exterior mirrors, you can lend your Golf or Golf Estate an even chicer, sportier look. The easy-to-mount caps are made from high-quality, robust plastic. Depending on the design, the caps come with a chic, high-gloss black design or a sportier matt chrome look. The R-Look matt chrome exterior mirror caps are made using a new vacuum coating. Also available: exterior mirror caps for the Polo in high-gloss black and exterior mirror caps for the Passat, Passat Estate and Arteon in matt chrome.

02 Matt chrome exterior mirror caps for the Passat saloon/Passat Estate/Arteon

03 R-look exterior mirror caps in high-gloss black for the Golf and Golf Estate

04 R-look exterior mirror caps in matt chrome for the Golf and Golf Estate

Not ill. High-gloss black exterior mirror caps for the Polo



05/06 Volkswagen Genuine tail silencer trims: The tail silencer trim enhances your vehicle's powerful good looks. The slanted modern shape combined with the premium materials ensure they are real visual highlights. Available as single or twin rear silencer trim, in high-gloss silver or high-gloss black depending on your model. See the price list for an overview of all available versions for your vehicle.

05 Rear silencer trim, high-gloss silver

06 Rear silencer trim, high-gloss black



! NOTE

See the overview of the availability of products for your Volkswagen on page 14.





01

01 Volkswagen Genuine load sill protection in stainless steel look: The stainless steel-look load sill protection not only protects the paintwork during loading and unloading, but also adds an extra visual touch. It is quick and easy to attach – simply stick it onto the load sill on the rear bumper.

02 Volkswagen Genuine sill panel trim: Personalised protection for your Volkswagen. The high-quality, vehicle-branded stainless steel or aluminium sill panel trims not only protect the heavily used entrance area, but also make a clear visual statement. Available for 2- and 4-door models. Design may vary depending on the vehicle model.

03 Volkswagen Genuine boot lid protective strip: Made from mirror-finish chrome, the attractive rear protective strip is not just an eye-catching feature, but also provides effective protection for the edge of the boot lid. The protective strip is simply glued to the lower edge of the boot lid.

Volkswagen Genuine suspension lowering kit (not illustrated): The Volkswagen Genuine suspension lowering kit gives your Volkswagen a distinctive sporty look and a powerful presence. The suspension lowering kit consists of four springs which lower the vehicle's centre of gravity and reduce the spring action when accelerating. This makes it feel more like a sports car. And you get a much smoother ride. Not in conjunction with a self-levelling suspension. Please see the price list for information about the different suspension lowering kits.



02



03



04



04



04

04 Volkswagen Genuine pedal cap set: These sporty, easy-to-fit, brushed stainless steel pedal caps will astound you with their top-quality design, while the non-slip coating ensures you always have a good grip on the pedal. Available for manual gearboxes and DSG (dual-clutch gearboxes/not illustrated). The exact design varies for each vehicle model.

05 Volkswagen Genuine key cover: Give your car keys a makeover with an attractive key cover. Available in a range of designs and lettering options. Simply attach your key and away you go.



05



06

06 Genuine Volkswagen badge "Wolfsburg crest": With the premium, full-size curved "Wolfsburg crest" badge in black/chrome, you can add an extra dash of individuality. The badge can be used on any vehicle and is easy to attach. The scope of delivery includes two badges, one cleaning cloth and installation instructions.

! NOTE

See the overview of the availability of products for your Volkswagen on page 14.

Sport and Design

This overview shows the options available for the individual products in our Sport and Design range for our current vehicle models. Please contact your Volkswagen dealership for more information as to whether the options can be installed in your particular vehicle. Many of the products are available in different variants. See the **price list** for an overview of all available versions.



| | Page | Arteon | Beetle Beetle Cabriolet | Golf | Golf Estate | Golf Sportsvan | Jetta | Passat | Passat Estate | Polo | Scirocco | Sharan | T-Cross | T-Roc | Tiguan | Tiguan Allspace | Touareg | Touran | up! | |
|--|----------|-----------------|----------------------------|--------------------|------------------|----------------|----------------|----------------|----------------|----------------|----------------|----------------|----------------|----------------|----------------|-----------------|----------------|----------------|----------------|---|
| | | f. MY. 2017 | f. MY. 2017 | f. MY. 2017 | f. MY. 2017 | f. MY. 2017 | f. MY. 2014 | f. MY. 2019 | f. MY. 2019 | f. MY. 2018 | f. MY. 2014 | f. MY. 2011 | f. MY. 2019 | f. MY. 2018 | f. MY. 2017 | f. MY. 2018 | f. MY. 2018 | f. MY. 2016 | f. MY. 2017 | |
| EXTERIOR | | | | | | | | | | | | | | | | | | | | |
| LED tail light clusters | | | | | | | | | | | | | | | | | | | | |
| - With animated turn signals | 8 | ○ | ○ | ● | ○ | ○ | ○ | ○ | ● | ○ | ○ | ○ | ○ | ○ | ○ | ○ | ○ | ○ | ○ | ○ |
| - In R-look | 8 | ○ | ○ | ● | ○ | ○ | ○ | ○ | ○ | ○ | ○ | ○ | ○ | ○ | ○ | ○ | ○ | ○ | ○ | ○ |
| - In R-Line look | 8 | ○ | ○ | ○ | ○ | ○ | ○ | ○ | ○ | ○ | ○ | ○ | ○ | ○ | ○ | ○ | ○ | ○ | ○ | ○ |
| - "Black Line" | 8 | ○ | ○ | ○ | ○ | ○ | ○ | ○ | ○ | ● | ○ | ○ | ○ | ○ | ○ | ○ | ○ | ○ | ○ | ○ |
| Dynamic LED turn signals | 10 | ○ | ○ | ● ⁵ | ● | ● | ○ | ○ | ○ | ○ | ○ | ○ | ○ | ○ | ○ | ○ | ○ | ○ | ○ | ○ |
| Exterior vehicle mirror | | | | | | | | | | | | | | | | | | | | |
| Exterior mirror caps | | | | | | | | | | | | | | | | | | | | |
| - Matt chrome | 10 | ● | ○ | ○ | ○ | ○ | ○ | ○ | ● | ○ | ○ | ○ | ○ | ○ | ○ | ○ | ○ | ○ | ○ | ○ |
| - High-gloss black | 10 | ○ | ○ | ○ | ○ | ○ | ○ | ○ | ○ | ○ | ○ | ○ | ○ | ○ | ○ | ○ | ○ | ○ | ○ | ○ |
| - In R-look, matt chrome | 10 | ● | ○ | ● ⁴ | ● ¹ | ○ | ○ | ○ | ○ | ○ | ○ | ○ | ○ | ○ | ○ | ○ | ○ | ○ | ○ | ○ |
| - In R-look, high-gloss black | 10 | ○ | ○ | ● | ● | ○ | ○ | ○ | ○ | ○ | ○ | ○ | ○ | ○ | ○ | ○ | ○ | ○ | ○ | ○ |
| Tail silencer trims | | | | | | | | | | | | | | | | | | | | |
| - High-gloss silver | 11 | ○ | ● | ● | ● ^{1,2} | ● | ● | ○ | ○ | ○ | ○ | ○ | ○ | ○ | ○ | ○ | ○ | ○ | ○ | ○ |
| - High-gloss black | 11 | ○ | ● | ● | ● | ● | ● | ○ | ○ | ○ | ○ | ○ | ○ | ○ | ○ | ○ | ○ | ○ | ○ | ○ |
| Load sill guard in stainless steel look | 12 | ○ | ○ | ● | ● ^{1,2} | ● | ○ | ○ | ○ | ○ | ○ | ○ | ○ | ○ | ○ | ○ | ○ | ○ | ○ | ○ |
| Protective strip for the boot lid | 12 | ○ | ○ | ● | ● ^{1,2} | ● | ○ | ○ | ○ | ○ | ○ | ○ | ○ | ○ | ○ | ○ | ○ | ○ | ○ | ○ |
| Suspension lowering kit | Not ill. | ○ | ○ | ● ^{4,7,8} | ○ | ○ | ○ | ○ | ○ | ○ | ○ | ○ | ○ | ○ | ○ | ○ | ○ | ○ | ○ | ○ |
| INTERIOR | | | | | | | | | | | | | | | | | | | | |
| Aluminium sill panel trim | 12 | ○ | ○ | ○ | ○ | ○ | ○ | ○ | ○ | ○ | ○ | ○ | ○ | ○ | ○ | ○ | ○ | ○ | ○ | ○ |
| Stainless steel sill panel trim | 12 | ○ | ● | ● | ● ^{5,6} | ○ | ○ | ○ | ○ | ○ | ○ | ○ | ○ | ○ | ○ | ○ | ○ | ○ | ○ | ○ |
| Pedal cap set | 13 | ○ | ○ | ○ | ○ | ○ | ○ | ○ | ○ | ○ | ○ | ○ | ○ | ○ | ○ | ○ | ○ | ○ | ○ | ○ |
| For manual or DSG gearbox | | | | | | | | | | | | | | | | | | | | |
| Key cover | 13 | ○ | ○ | ○ | ○ | ○ | ○ | ○ | ○ | ○ | ○ | ○ | ○ | ○ | ○ | ○ | ○ | ○ | ○ | ○ |
| Volkswagen, R, Wolfsburg, up!, Beetle | | | | | | | | | | | | | | | | | | | | |
| Badge "Wolfsburg crest" | 13 | For any vehicle | | | | | | | | | | | | | | | | | | |

¹ Also for the Golf Alltrack

² Also for the Golf GTD Estate

³ Also for the Passat GTE and Passat GTE Estate

⁴ Also for the Golf GTI

⁵ Also for the e-Golf

⁶ Also for the Golf GTE and GTD

⁷ A suitable lifting platform is required for installation.

⁸ Not in conjunction with self-levelling suspension

Additional Sport and Design products, such as aerodynamic items specifically tailored for your vehicle, can be found in the relevant vehicle catalogue or at volkswagen.de.

Aerodynamic Accessories

To give your Volkswagen a sporty makeover, we offer you a wide range of aerodynamic, vehicle-specific Accessories – from a front skirt and side skirts to the roof spoiler. This page provides you with an overview of all available aerodynamic components for the latest Volkswagen models. Further information regarding the products is available in the corresponding vehicle catalogues.



| | Page | Arteon | Beetle Beetle Cabriolet | Golf | Golf Estate | Golf Sportsvan | Jetta | Passat | Passat Estate | Polo | Scirocco | Sharan | T-Cross | T-Roc | Tiguan | Tiguan Allspace | Touareg | Touran | up! up! |
|---|----------|----------------|----------------------------|--------------------|----------------|----------------|----------------|----------------|----------------|----------------|----------------|----------------|----------------|----------------|----------------|-----------------|----------------|----------------|----------------|
| | | f. MY. 2017 | f. MY. 2017 | f. MY. 2017 | f. MY. 2017 | f. MY. 2017 | f. MY. 2014 | f. MY. 2019 | f. MY. 2019 | f. MY. 2018 | f. MY. 2014 | f. MY. 2011 | f. MY. 2019 | f. MY. 2018 | f. MY. 2017 | f. MY. 2018 | f. MY. 2018 | f. MY. 2016 | f. MY. 2017 |
| VEHICLE-SPECIFIC AERODYNAMIC ACCESSORIES⁵ | | | | | | | | | | | | | | | | | | | |
| Roof spoiler/rear wing | Not ill. | ● ⁴ | ● | ● ^{1,2,3} | ○ | ○ | ● | ○ | ○ | ● | ● | ○ | ○ | ○ | ● | ● | ○ | ○ | ● |
| Front skirt | Not ill. | ○ | ○ | ○ | ○ | ○ | ○ | ○ | ○ | ○ | ● | ○ | ○ | ○ | ○ | ○ | ○ | ○ | ○ |
| Side skirts | Not ill. | ○ | ○ | ● | ○ | ○ | ● | ○ | ○ | ○ | ● | ○ | ○ | ○ | ○ | ○ | ○ | ○ | ○ |
| Rear skirt with diffuser | Not ill. | ○ | ○ | ○ | ○ | ○ | ○ | ○ | ○ | ○ | ● | ○ | ○ | ○ | ○ | ○ | ○ | ○ | ○ |
| Diffuser | Not ill. | ○ | ○ | ● ⁴ | ○ | ○ | ○ | ○ | ○ | ○ | ○ | ○ | ○ | ○ | ○ | ○ | ○ | ○ | ○ |
| Centre sports tail silencer | Not ill. | ○ | ○ | ● | ○ | ○ | ○ | ○ | ○ | ○ | ○ | ○ | ○ | ○ | ○ | ○ | ○ | ○ | ○ |
| Front off-road design trim | Not ill. | ○ | ○ | ○ | ○ | ○ | ○ | ○ | ○ | ○ | ○ | ○ | ○ | ○ | ● | ● | ○ | ○ | ○ |
| Running boards | Not ill. | ○ | ○ | ○ | ○ | ○ | ○ | ○ | ○ | ○ | ○ | ○ | ● | ● | ● | ● | ● | ○ | ○ |

¹ Also for the Golf GTI

² Also for the e-Golf

³ Also for the Golf GTE and GTD

⁴ Component already painted high-gloss black

⁵ The vehicle-specific aerodynamic accessories can be found in the relevant vehicle catalogue and at volkswagen.de.



Illustration shows: Merano wheels page 22.



Extra traction to make me feel good.

“Top-class quality and good style are both top priority for me. With the alloy wheels and complete wheels, I can always rest assured in every respect. Team work that is perfectly in sync for a safer driving experience and the best way to arrive at your destination – now, that’s a good feeling.”

→ **Want a more individual look?**

Add an extra special touch to your Volkswagen: the Volkswagen vehicle catalogues contain a range of tailored aerodynamic and design solutions, and individual accessories for each vehicle model.



→ **Volkswagen Genuine hub caps¹**

Volkswagen Genuine hub caps with an embossed Volkswagen logo impress with their dynamic spinning function, which guarantees that the Volkswagen logo remains in the perfect position while driving and in any parking situation.

¹ Use of the hub cap depends on the wheel.
Please ask your Volkswagen dealership.

Reliable **complete wheels.**

Understanding the essentials. Our manufacturing expertise.

Our complete wheels represent everything that Volkswagen Accessories stands for: outstanding quality, maximum safety standards and state-of-the-art design. No other vehicle component bears as much responsibility as the wheel. Both in terms of safe driving and the vehicle's overall appearance. Which is why we offer such an extensive range of complete wheels. Complete wheels from Volkswagen Accessories are designed to match the corresponding Volkswagen models perfectly. Drawing on their many years of experience, our engineers choose the ideal combination of wheel, tyre and vehicle to ensure that each design meets Volkswagen's high quality and safety standards. Our technical installation checks are an integral part of this, taking into account the engine variants and brake dimensions as well as axle loads.

Scan the QR code to explore the full range of alloy wheels and complete wheels from Volkswagen Accessories.



Only the best succeed. Volkswagen Genuine alloy wheels.

- Strength tests check the wheel loads when the vehicle is overloaded, in a collision and driving round corners.
- The materials and surfaces are tested for resistance to traction, extension, scratches and corrosion.
- Test drives on the track put the complete wheels through their paces under tough conditions.
- Endurance testing on the dual-axle wheel test bench simulates the highest possible load.

Extreme endurance athletes. Our selected premium tyres.

Over the course of its average lifetime, a tyre can travel far enough to circumnavigate the globe. As the main component that keeps the vehicle connected to the road, it has to be designed to handle a wide range of different driving conditions and provide performance you can rely on. A top-quality tyre is essential. We work closely with leading premium tyre manufacturers to ensure that all of our complete wheels provide optimum contact with the road surface.

When everything works together. The complete wheel assembly.

Using the latest production technology, we can automatically combine rims and tyres to form a single high-quality unit. Our precise assembly procedures are carried out in temperature-controlled environments to help ensure that all of our complete wheels are of the highest quality, and also provide you with a range of other key advantages:

- Optimised rotational and axial measurement for each and every wheel.
- Residual imbalance check for each individual vehicle.
- Expert storage until the complete wheels are ready for delivery.

Summer alloy wheels



Our attractive summer alloy wheels deliver an outstanding combination of timeless design and excellent quality.



Triangle, 16-inch
Black, gloss-machined



Blade, 17-inch
Black, gloss-machined



Bonneville, 17-inch
Black, gloss-machined



Polygon, 17-inch
Black, gloss-machined



Salvador, 17-inch
Grey Metallic



Singapore, 17-inch
Black, gloss-machined



Pretoria, 18-inch
Sterling Silver



Rotary, 18-inch
Anthracite



Sebring, 18-inch
Sterling Silver



Montevideo, 19-inch
Black, gloss-machined



Auckland, 19-inch
Dark Graphite Metallic



Brescia, 18 and 19-inch
Black, gloss-machined



Braga, 20-inch
Matt Dark Graphite



Kapstadt, 20-inch
Grey Metallic



Monterey, 20-inch
Grey Metallic



Nevada, 20-inch
Black, gloss-machined



Nevada, 20-inch
Black



Rosario, 20-inch
Matt Dark Graphite



Marseille, 18-inch
Black, gloss-machined



Monterey, 18-inch
Grey Metallic



Preston, 18-inch
Black, gloss-machined



Pretoria, 18-inch
Black



Sebring, 16, 17, 18, 19-inch
Grey Metallic



Suzuka, 19-inch
Dark Graphite Metallic



Twinspoke, 19-inch
Black, gloss-machined



Twinspoke Red, 19-inch
Black / Red



! NOTE

For an overview of the availability, sizes and colours of alloy wheels for your Volkswagen, please see page 24.

Further accessories for your wheels, e.g. valve caps, wheel bolt locking sets and a tyre bag set can be found on page 81.



Please note our wide range of complete summer and winter wheels. The respective catalogues are available from your Volkswagen dealership or online at volkswagen.de

The requirements of the current ABE (German type approval) or of current certification are to be observed. Please use the existing standard-fit wheel bolts. Please ensure that the load index (LI) of the selected tyres is not lower than the LI specified in the vehicle documents or CoC papers.

All winter alloy wheels are treated with an especially resistant coating to ensure that they are suitable for use in winter. Please see the attached price list for technical details.

Winter alloy wheels



Our winter wheels are very easy to clean and particularly well suited for use with snow chains.



Aspen, 15 and 16-inch
Brilliant Silver

Corvara, 14, 15, 16, 17-inch
Brilliant Silver



Salvador, 17-inch
Grey Metallic

Merano, 14, 15, 16, 17, 18-inch
Brilliant Silver

Merano, 16, 17, 18-inch
Adamantium Dark Metallic

Sebring, 18-inch
Sterling Silver



Auckland, 19-inch
Sterling Silver

Sebring, 18, 19-inch
Grey Metallic

Monterey, 18, 20-inch
Grey Metallic

Nevada, 18, 20-inch
Black

WHEEL TRIMS



7-double-spoke design
14-inch

Slit design
14-inch



6-double-spoke design
16-inch

7-finger design
16-inch



Trapezium design
16-inch

Turbine design
16-inch



9-finger design
15-inch



12-spoke design
15-inch



Twist design
15-inch



V design
15-inch



7-spoke design
16-inch



8-finger design
16-inch



15-finger design
16-inch



18-finger design
16-inch



Y-design
16-inch



9-spoke design
17-inch



! NOTE

For an overview of the availability, sizes and colours of alloy wheels for your Volkswagen, please see page 26.

Further accessories for your wheels, e.g. valve caps, wheel bolt locking sets and a tyre bag set can be found on page 81.



Please note our wide range of complete summer and winter wheels. The respective catalogues are available from your Volkswagen dealership or online at volkswagen.de

The requirements of the current ABE (German type approval) or of current certification are to be observed. Please use the existing standard-fit wheel bolts. Please ensure that the load index (LI) of the selected tyres is not lower than the LI specified in the vehicle documents or CoC papers.

All winter alloy wheels are treated with an especially resistant coating to ensure that they are suitable for use in winter. Please see the attached price list for technical details.

Alloy wheels and complete wheels

This overview shows the options available for the individual products in our alloy wheels and complete wheels range for our current vehicle models. Please contact your Volkswagen dealership for more information as to whether the options can be installed in your particular vehicle. Many of the products are available in different variants. See the **price list** for an overview of all available versions.



| | Page | Arteon | Beetle Beetle Cabriolet | Golf | Golf Estate | Golf Sportsvan | Jetta | Passat | Passat Estate | Polo | Scirocco | Sharan | T-Cross | T-Roc | Tiguan | Tiguan Allspace | Touareg | Touran | up! ¹ |
|-----------------------------------|------|----------------|----------------------------|--------------------|----------------|----------------|----------------|----------------|----------------|----------------|----------------|----------------|----------------|----------------|----------------|-----------------|----------------|----------------|------------------|
| | | f. MY. 2017 | f. MY. 2017 | f. MY. 2017 | f. MY. 2017 | f. MY. 2017 | f. MY. 2014 | f. MY. 2019 | f. MY. 2019 | f. MY. 2018 | f. MY. 2014 | f. MY. 2011 | f. MY. 2019 | f. MY. 2018 | f. MY. 2017 | f. MY. 2018 | f. MY. 2018 | f. MY. 2016 | f. MY. 2017 |
| ☀️ SUMMER WHEELS | | | | | | | | | | | | | | | | | | | |
| 16-inch | | | | | | | | | | | | | | | | | | | |
| Sebring, Grey Metallic | 21 | ○ | ○ | ○ | ○ | ○ | ○ | ○ | ○ | ● ⁶ | ○ | ○ | ○ | ○ | ○ | ○ | ○ | ○ | ○ |
| Triangle, Black, gloss-machined | 20 | ○ | ○ | ○ | ○ | ○ | ○ | ○ | ○ | ○ | ○ | ○ | ○ | ○ | ○ | ○ | ○ | ○ | ● |
| 17-inch | | | | | | | | | | | | | | | | | | | |
| Blade, Black, gloss-machined | 20 | ○ | ○ | ● ^{1,2,3} | ● ⁴ | ● | ● | ○ | ○ | ○ | ○ | ○ | ○ | ○ | ○ | ○ | ○ | ○ | ○ |
| Bonneville, Black, gloss-machined | 20 | ○ | ○ | ○ | ○ | ○ | ○ | ○ | ○ | ● | ○ | ○ | ○ | ○ | ○ | ○ | ○ | ○ | ○ |
| Polygon, Black, gloss-machined | 20 | ○ | ○ | ○ | ○ | ○ | ○ | ○ | ○ | ○ | ○ | ○ | ○ | ○ | ○ | ○ | ○ | ○ | ● |
| Salvador, Grey Metallic | 20 | ○ | ○ | ● | ● | ● | ○ | ● | ● | ○ | ○ | ○ | ○ | ○ | ○ | ○ | ○ | ○ | ○ |
| Sebring, Grey Metallic | 21 | ○ | ○ | ○ | ○ | ○ | ○ | ○ | ○ | ○ | ○ | ○ | ● | ○ | ○ | ○ | ○ | ○ | ○ |
| Singapore, Black, gloss-machined | 20 | ○ | ○ | ○ | ○ | ○ | ○ | ● | ● | ○ | ○ | ○ | ○ | ○ | ○ | ○ | ○ | ○ | ○ |
| 18-inch | | | | | | | | | | | | | | | | | | | |
| Brescia, Black, gloss-machined | 20 | ○ | ○ | ○ | ○ | ○ | ○ | ○ | ○ | ● | ○ | ○ | ○ | ○ | ○ | ○ | ○ | ○ | ○ |
| Marseille, Black, gloss-machined | 21 | ○ | ○ | ○ | ○ | ○ | ○ | ● | ● | ○ | ○ | ○ | ○ | ○ | ○ | ○ | ○ | ○ | ○ |
| Monterey, Grey Metallic | 21 | ○ | ○ | ○ | ○ | ○ | ○ | ● | ● | ○ | ○ | ○ | ○ | ○ | ○ | ○ | ○ | ○ | ○ |
| Preston, Black, gloss-machined | 21 | ○ | ○ | ● ^{1,2,3} | ● | ● | ● | ○ | ○ | ○ | ○ | ○ | ○ | ○ | ○ | ○ | ○ | ○ | ○ |
| Pretoria, Black | 21 | ○ | ○ | ● ^{1,2,3} | ● | ● | ● | ○ | ○ | ○ | ○ | ○ | ○ | ○ | ○ | ○ | ○ | ○ | ○ |
| Pretoria, Sterling Silver | 20 | ○ | ○ | ● ^{1,2,3} | ● | ● | ● | ○ | ○ | ○ | ○ | ○ | ○ | ○ | ○ | ○ | ○ | ○ | ○ |
| Rotary, Anthracite | 20 | ○ | ○ | ● ^{1,2,3} | ● | ● | ● | ○ | ○ | ○ | ○ | ○ | ○ | ○ | ○ | ○ | ○ | ○ | ○ |
| Sebring, Grey Metallic | 21 | ● | ○ | ○ | ○ | ○ | ○ | ○ | ○ | ○ | ○ | ○ | ○ | ● | ● | ● | ○ | ○ | ○ |
| Sebring, Sterling Silver | 20 | ○ | ○ | ○ | ○ | ○ | ○ | ○ | ○ | ○ | ○ | ○ | ○ | ○ | ● | ● | ○ | ○ | ○ |

¹ Also for the Golf GTI² Also for the Golf GTD³ Also for the Golf R⁴ Also for the Golf Alltrack and Golf GTD Estate⁵ Also for the e-Golf⁶ Also for the Polo GTI

Please observe the conditions and information contained in the relevant General Operating Approval (ABE) certification. For further usable tyre sizes, please see the report for the relevant alloy wheel. All winter alloy wheels are treated with an especially resistant coating to ensure that they are suitable for use in winter. Please see the attached price list for technical details.

| | Page | Arteon | Beetle Beetle Cabriolet | Golf | Golf Estate | Golf Sportsvan | Jetta | Passat | Passat Estate | Polo | Scirocco | Sharan | T-Cross | T-Roc | Tiguan | Tiguan Allspace | Touareg | Touran | up! | |
|----------------------------------|------|----------------|----------------------------|----------------|----------------|----------------|----------------|----------------|----------------|----------------|----------------|----------------|----------------|----------------|----------------|-----------------|----------------|----------------|----------------|---|
| | | f. MY. 2017 | f. MY. 2017 | f. MY. 2017 | f. MY. 2017 | f. MY. 2017 | f. MY. 2014 | f. MY. 2019 | f. MY. 2019 | f. MY. 2018 | f. MY. 2014 | f. MY. 2011 | f. MY. 2019 | f. MY. 2018 | f. MY. 2017 | f. MY. 2018 | f. MY. 2018 | f. MY. 2016 | f. MY. 2017 | |
| ❄️ WINTER WHEELS | | | | | | | | | | | | | | | | | | | | |
| 14-inch | | | | | | | | | | | | | | | | | | | | |
| Corvara, Brilliant Silver | 22 | ○ | ○ | ○ | ○ | ○ | ○ | ○ | ○ | ○ | ○ | ○ | ○ | ○ | ○ | ○ | ○ | ○ | ○ | ● |
| Merano, Brilliant Silver | 22 | ○ | ○ | ○ | ○ | ○ | ○ | ○ | ○ | ○ | ○ | ○ | ○ | ○ | ○ | ○ | ○ | ○ | ○ | ● |
| 15-inch | | | | | | | | | | | | | | | | | | | | |
| Aspen, Brilliant Silver | 22 | ○ | ○ | ● ⁵ | ● | ● | ● | ○ | ○ | ○ | ○ | ○ | ○ | ○ | ○ | ○ | ○ | ○ | ○ | ○ |
| Corvara, Brilliant Silver | 22 | ○ | ○ | ● | ● | ● | ● | ○ | ○ | ● | ○ | ○ | ○ | ○ | ○ | ○ | ○ | ○ | ○ | ○ |
| Merano, Brilliant Silver | 22 | ○ | ○ | ● | ● | ● | ○ | ○ | ○ | ○ | ○ | ○ | ○ | ○ | ○ | ○ | ○ | ○ | ○ | ○ |
| 16-inch | | | | | | | | | | | | | | | | | | | | |
| Aspen, Brilliant Silver | 22 | ○ | ○ | ● | ● | ● | ● | ○ | ○ | ○ | ○ | ● | ○ | ○ | ○ | ○ | ○ | ○ | ○ | ○ |
| Corvara, Brilliant Silver | 22 | ○ | ● | ● | ● | ● | ● | ● | ● | ○ | ● | ● | ○ | ● | ○ | ○ | ○ | ○ | ● | ○ |
| Merano, Brilliant Silver | 22 | ○ | ○ | ● | ● | ● | ○ | ○ | ○ | ● | ○ | ○ | ● | ○ | ○ | ○ | ○ | ○ | ○ | ○ |
| Merano, Adamantium Dark Metallic | 22 | ○ | ○ | ○ | ○ | ○ | ○ | ○ | ○ | ● | ○ | ○ | ● | ○ | ○ | ○ | ○ | ○ | ○ | ○ |
| 17-inch | | | | | | | | | | | | | | | | | | | | |
| Corvara, Brilliant Silver | 22 | ○ | ● | ○ | ○ | ○ | ○ | ● | ● | ○ | ● | ● | ○ | ○ | ● | ● | ● | ○ | ○ | ○ |
| Merano, Brilliant Silver | 22 | ● | ○ | ○ | ○ | ○ | ○ | ○ | ○ | ○ | ○ | ○ | ● | ● | ● | ● | ○ | ○ | ○ | ○ |
| Merano, Adamantium Dark Metallic | 22 | ● | ○ | ○ | ○ | ○ | ○ | ● | ● | ○ | ○ | ○ | ○ | ● | ● | ● | ○ | ○ | ○ | ○ |
| Salvador, Grey Metallic | 22 | ○ | ○ | ○ | ○ | ○ | ○ | ● | ● | ○ | ○ | ○ | ○ | ○ | ○ | ○ | ○ | ○ | ○ | ○ |

¹ Also for the Golf GTI² Also for the Golf GTD³ Also for the Golf R⁴ Also for the Golf Alltrack and Golf GTD Estate⁵ Also for the e-Golf⁶ Also for the Polo GTI

Please observe the conditions and information contained in the relevant General Operating Approval (ABE) certification. For further usable tyre sizes, please see the report for the relevant alloy wheel. All winter alloy wheels are treated with an especially resistant coating to ensure that they are suitable for use in winter. Please see the attached price list for technical details.

| | Page | Arteon | Beetle Beetle Cabriolet | Golf | Golf Estate | Golf Sportsvan | Jetta | Passat | Passat Estate | Polo | Scirocco | Sharan | T-Cross | T-Roc | Tiguan | Tiguan Allspace | Touareg | Touran | up! | |
|-----------------------|------|----------------|----------------------------|----------------|----------------|----------------|----------------|----------------|----------------|----------------|----------------|----------------|----------------|----------------|----------------|-----------------|----------------|----------------|----------------|---|
| | | f. MY. 2017 | f. MY. 2017 | f. MY. 2017 | f. MY. 2017 | f. MY. 2017 | f. MY. 2014 | f. MY. 2019 | f. MY. 2019 | f. MY. 2018 | f. MY. 2014 | f. MY. 2011 | f. MY. 2019 | f. MY. 2018 | f. MY. 2017 | f. MY. 2018 | f. MY. 2018 | f. MY. 2016 | f. MY. 2017 | |
| WHEEL TRIMS | | | | | | | | | | | | | | | | | | | | |
| 14-inch | | | | | | | | | | | | | | | | | | | | |
| 7-double-spoke design | 22 | ○ | ○ | ○ | ○ | ○ | ○ | ○ | ○ | ● | ○ | ○ | ○ | ○ | ○ | ○ | ○ | ○ | ○ | |
| Slit design | 22 | ○ | ○ | ○ | ○ | ○ | ○ | ○ | ○ | ○ | ○ | ○ | ○ | ○ | ○ | ○ | ○ | ○ | ○ | ● |
| 15-inch | | | | | | | | | | | | | | | | | | | | |
| 9-finger design | 23 | ○ | ○ | ● | ● | ● | ● | ○ | ○ | ○ | ○ | ○ | ○ | ○ | ○ | ○ | ○ | ○ | ○ | ○ |
| 12-spoke design | 23 | ○ | ○ | ● | ● | ● | ○ | ○ | ○ | ○ | ○ | ○ | ○ | ○ | ○ | ○ | ○ | ○ | ○ | ○ |
| Twist design | 23 | ○ | ○ | ○ | ○ | ○ | ○ | ○ | ○ | ● | ○ | ○ | ○ | ○ | ○ | ○ | ○ | ○ | ○ | ○ |
| V design | 23 | ○ | ○ | ● | ● | ● | ● | ○ | ○ | ○ | ○ | ○ | ○ | ○ | ○ | ○ | ○ | ○ | ○ | ○ |
| 16-inch | | | | | | | | | | | | | | | | | | | | |
| 6-double-spoke design | 22 | ○ | ○ | ○ | ○ | ○ | ○ | ○ | ○ | ○ | ○ | ○ | ○ | ○ | ○ | ○ | ○ | ○ | ○ | ○ |
| 7-finger design | 22 | ○ | ○ | ○ | ● | ● | ● | ○ | ○ | ○ | ○ | ○ | ○ | ○ | ○ | ○ | ○ | ○ | ○ | ○ |
| 7-spoke design | 23 | ○ | ○ | ○ | ○ | ○ | ○ | ○ | ○ | ○ | ○ | ○ | ○ | ● | ○ | ○ | ○ | ○ | ○ | ○ |
| 8-finger design | 23 | ○ | ○ | ○ | ● | ● | ● | ○ | ○ | ○ | ○ | ○ | ○ | ○ | ○ | ○ | ○ | ○ | ○ | ○ |
| 15-finger design | 23 | ○ | ○ | ○ | ○ | ○ | ○ | ○ | ○ | ○ | ○ | ● | ○ | ○ | ○ | ○ | ○ | ○ | ○ | ○ |
| 18-finger design | 23 | ○ | ○ | ○ | ○ | ○ | ○ | ● | ● | ○ | ● | ○ | ○ | ○ | ○ | ○ | ○ | ○ | ○ | ○ |
| Trapezium design | 22 | ○ | ● | ○ | ○ | ○ | ○ | ○ | ○ | ○ | ○ | ○ | ○ | ○ | ○ | ○ | ○ | ○ | ○ | ○ |
| Turbine design | 22 | ○ | ○ | ○ | ○ | ○ | ○ | ● | ● | ○ | ○ | ○ | ○ | ○ | ○ | ○ | ○ | ○ | ○ | ○ |
| Y-design | 23 | ○ | ○ | ● | ● | ● | ○ | ○ | ○ | ○ | ○ | ○ | ○ | ○ | ○ | ○ | ○ | ○ | ○ | ○ |
| 17-inch | | | | | | | | | | | | | | | | | | | | |
| 9-spoke design | 23 | ○ | ○ | ○ | ○ | ○ | ○ | ○ | ○ | ○ | ○ | ○ | ○ | ○ | ● | ● | ○ | ○ | ○ | ○ |

¹ Also for the Golf GTI

² Also for the Golf GTD

³ Also for the Golf R

⁴ Also for the Golf GTI, Golf GTD, Golf GTE and e-Golf

⁵ Also for the Golf Alltrack and Golf GTD Estate

⁶ Also for the e-Golf

⁷ Also for the Polo GTI

Please observe the conditions and information contained in the relevant General Operating Approval (ABE) certification. For further usable tyre sizes, please see the report for the relevant alloy wheel. All winter alloy wheels are treated with an especially resistant coating to ensure that they are suitable for use in winter. Please see the attached price list for technical details.

| | Page | Arteon | Beetle Beetle Cabriolet | Golf | Golf Estate | Golf Sportsvan | Jetta | Passat | Passat Estate | Polo | Scirocco | Sharan | T-Cross | T-Roc | Tiguan | Tiguan Allspace | Touareg | Touran | up! |
|---|----------|---|----------------------------|----------------|----------------|----------------|----------------|----------------|----------------|----------------|----------------|----------------|----------------|----------------|----------------|-----------------|----------------|----------------|----------------|
| | | f. MY. 2017 | f. MY. 2017 | f. MY. 2017 | f. MY. 2017 | f. MY. 2017 | f. MY. 2014 | f. MY. 2019 | f. MY. 2019 | f. MY. 2018 | f. MY. 2014 | f. MY. 2011 | f. MY. 2019 | f. MY. 2018 | f. MY. 2017 | f. MY. 2018 | f. MY. 2018 | f. MY. 2016 | f. MY. 2017 |
| ACCESSORIES | | | | | | | | | | | | | | | | | | | |
| Hub cover for the up!, Black, | Not ill. | ○ | ○ | ○ | ○ | ○ | ○ | ○ | ○ | ○ | ○ | ○ | ○ | ○ | ○ | ○ | ○ | ○ | ● |
| ADDITIONAL ACCESSORIES | | | | | | | | | | | | | | | | | | | |
| Dynamic hub caps | 18 | Use of the dynamic hub cap depends on the wheel. Please ask your Volkswagen dealership. | | | | | | | | | | | | | | | | | |
| Tyre bag sets | 81 | For any vehicle | | | | | | | | | | | | | | | | | |
| Valve cap sets | | | | | | | | | | | | | | | | | | | |
| - For aluminium valves | 81 | For any vehicle | | | | | | | | | | | | | | | | | |
| - For rubber and metal valves | 81 | For any vehicle | | | | | | | | | | | | | | | | | |
| Wheel bolt locking set | 81 | For any vehicle | | | | | | | | | | | | | | | | | |
| Snox snow chain (powered by pewag) | 81 | ○ | ● | ● | ● | ● | ● | ● | ● | ○ | ● | ● | ○ | ○ | ○ | ○ | ○ | ● | ● |
| Servo SUV snow chain (powered by pewag) | 81 | ○ | ○ | ○ | ○ | ○ | ○ | ○ | ○ | ○ | ○ | ○ | ○ | ○ | ● | ● | ● | ○ | ○ |
| Servo 9 snow chain (powered by pewag) | 81 | ● | ○ | ○ | ○ | ○ | ○ | ● | ● | ● | ○ | ○ | ● | ● | ○ | ○ | ○ | ○ | ○ |



Illustration shows: Travel and comfort system and tablet holder, pages 32 and 68.



The freedom of communication just the way I like it.

"I would like to always be able to decide what I fancy doing. Be it enjoying Infotainment, navigation, hands-free calling or music – it's the freedom of choice that makes a good journey for me. Plus the security of knowing I don't have to do without."

→ **Want more entertainment?**

Add an extra special touch to your Volkswagen: The Volkswagen vehicle catalogues contain a range of tailored aerodynamic and design solutions, and individual accessories for the relevant vehicle model.



01

01 Universal tablet holder and safety cases:
One for all: The universal tablet holder for the modular travel and comfort system can be used to secure a range of current tablets when used in conjunction with the protective safety cases. Simply fit the universal holder to the base module, insert the tablet into the matching safety case and then attach to the universal holder. Please check the price list for the safety cases available. Only in conjunction with the base holder for the modular travel and comfort system.



Scan the QR code and experience the modular travel and comfort system with moving pictures.

! NOTE

The complete modular **travel and comfort system** can be found on page 68.



02



03

02 Tablet holder: A real pleasure for passengers. The innovative tablet holder from the modular travel and comfort system range allows rear seat passengers to use a tablet conveniently and flexibly. It features a swivelling axis so that the tablet can be positioned either vertically or horizontally, and it can tilt and lock into place to keep it at the perfect angle. The modular travel and comfort system base module, which enables you to connect the tablet holder to a headrest, must be ordered separately.

03 Action camera holder: For moving moments: you can use the action camera holder to attach compatible action cameras to the modular travel and comfort system. This allows you to keep an eye on your children travelling in the back, for instance. You can stream the images directly to your vehicle's display,^{1,2} and with the swivelling, lockable arm and 360° rotating bracket with marked degree intervals, you can easily align the camera with the area you wish to view. The modular travel and comfort system base module is required to use the action camera holder.

¹ This function depends on the Infotainment system in your vehicle. Please observe the notes in your vehicle manual.

² Videos must not be viewed while driving.



01



02

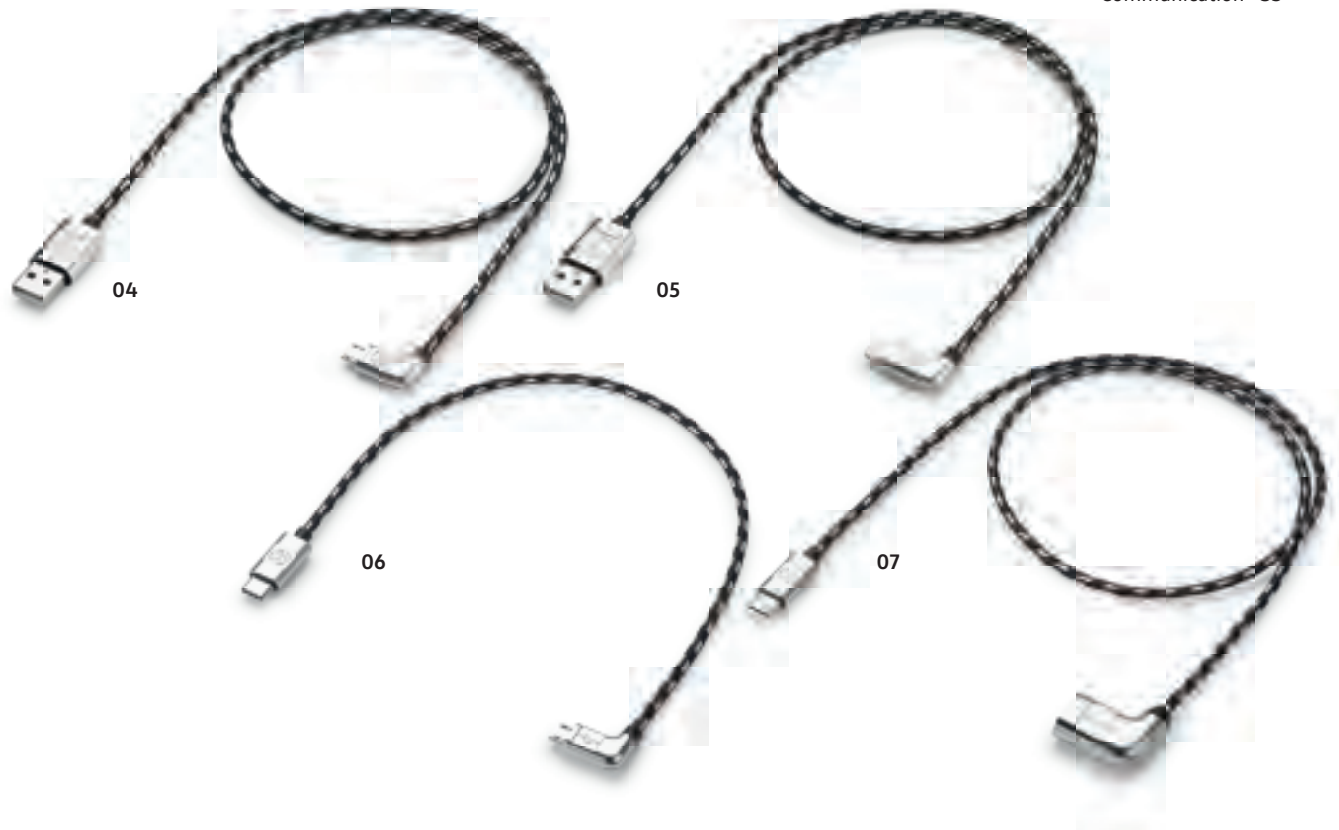
01/02 Plug & Play sound system: Enjoy rich sound in your vehicle with the Volkswagen Accessories sound system. The system consists of an amplifier plus an integrated digital sound processor with a total sine-wave output of 300 watt/480 watt music and a powerful subwoofer. As well as providing excellent musical entertainment, the system also sports an impressive range of vehicle and driver-specific sound setups to suit the vehicle's configuration perfectly. These can be programmed at the dealership. The system utilises the vehicle's existing speakers and can be installed in the spare wheel well. In vehicles with a spare wheel, the sound system can also be installed in the luggage compartment. In this case it is attached using a hook and loop system.

01 For the spare wheel well

02 For the luggage compartment

¹ Driver distraction may lead to accidents and serious injuries. Do not attempt to pair a mobile phone and vehicle while driving.

² iPhone, iPod, iPad, iPad mini, iPad Air, Apple Lightning are registered trademarks of Apple Computer International. Galaxy Tab is a registered trademark of Samsung Electronics Co., Ltd. Android is a trademark of Google Inc.



03 AppConnect activation document: AppConnect includes three innovative technological functions which you can use to display your smartphone apps on the touchscreen of your Infotainment system: MirrorLink™, the new CarPlay™ function from Apple² and the Android² Auto™ function from Google². MirrorLink™ enables you to connect your MirrorLink™-compatible smartphone to your vehicle and conveniently operate selected apps via your Infotainment system screen. Thanks to Android² Auto™ from Google², you can conveniently operate your own smartphone apps with the Android operating system while driving¹. And with CarPlay™ from Apple² you can control selected apps from your iPhone² while on the road. Using the apps is as intuitive as it usually is on your iPhone².

The use of Apple² CarPlay™ is only available in conjunction with an Apple²-compatible USB port. For vehicles from model year 2016 onwards.

04/05/06/07 USB Premium connection cable: Connect your smartphone to your Volkswagen's Infotainment system using the specially-designed Premium USB cable, and enjoy functions such as CarPlay™ in AppConnect while charging your device at the same time. The cable is designed to match the vehicle interior, with a textile surround and chrome-plated metal connector with a Volkswagen logo. The Premium cable is also designed to work perfectly in conjunction with the "maps + more" smartphone cradle system in the up!. See the price list for an overview of all available versions and various cable lengths.

- 04** USB Premium connection cable, USB-A to Micro-USB (30 cm/70 cm)
- 05** USB Premium connection cable, USB-A to Apple Lightning (30 cm/70 cm)
- Not ill. **06** USB Premium connection cable, USB-A to USB-C (30 cm/70 cm)
- 06.** USB Premium connection cable, USB-C to Micro-USB (30 cm/70 cm)
- Not ill. **07** USB Premium connection cable, USB-C to Apple Lightning (30 cm/70 cm)
- Not ill. **07.** USB Premium connection cable, USB-C to USB-C (30 cm/70 cm)
- 07.** USB Premium connection cable, USB-C to USB-A port (30 cm/70 cm)



01



02



03

01 MIB navigation system retrofit option to Discover Media: The "Discover Media" navigation system makes the hearts of the technically minded beat faster. In addition to a colour display with a touchscreen, USB and AUX IN connections and two SD card slots, it enables you to make calls comfortably while driving thanks to an integrated Bluetooth connection. The CD drive can play audio files in MP3, AAC and WMA formats. The innovative phase diversity technology also provides an optimal signal in the case of reduced radio coverage. The "Discover Media" comes with a 2D and 2.5 D map view, and allows you to choose a route with the help of three criteria (fast, short, economical). The dynamic TMC function informs you about current changes in the road traffic. Depending on the vehicle model, either the central control unit or the entire unit including the display and control unit is replaced.

For vehicles where the display and control unit are not replaced, the navigation system can be called up using the menu function.



04



05

02 RMT 400N/RMT 450N MP3 radio navigation system: A real all-rounder. The RMT 400N/RMT 450N 2-DIN radio navigation system features seamless Plug & Play integration and supports all current media formats including UKW, MW, CD, USB and MP3. It is also "DAB Ready", "DVB-T Ready" and "RVC"-capable. The integrated TMC navigation system and pre-installed maps for 47 European countries will ensure you always get to your destination as quickly as possible. The RMT 400N/450N can also be used as a display for some of your vehicle's functions such as the air conditioning and Park Distance Control. The functions can also be controlled via an optional remote control system on the steering wheel.

03 Volkswagen voice control activation document: This feature (which can be activated retroactively) enables you to control the telephone and radio on the "Composition Media" radio and also the navigation with the "Discover Media" navigation function using voice commands.

04 Volkswagen Genuine CarStick LTE: The Volkswagen CarStick LTE can be used to generate an internet connection for our mobile online services (Volkswagen CarNet) so you can use them without having to tether a smartphone. It also allows you to create a Wi-Fi hotspot in your vehicle in seconds. Simply insert a suitable SIM card¹ into the Volkswagen CarStick LTE, and connect it to the "Discover Media" navigation system. You can then connect any Wi-Fi enabled device to your own on-board network. Simply plug it into the vehicle's own USB port and off you go.

05 Volkswagen Genuine DUCI USB charging adapter (double USB charging adapter): Finally... A safe and convenient way to charge in your vehicle! The Volkswagen Genuine DUCI (Double USB Charger Insert) enables you to charge your mobile devices quickly via two USB ports. The DUCI simply plugs into the cigarette lighter where its special design helps it blend in perfectly with the vehicle. The white LEDs not only look good, but also help you to find the USB connector quickly in the dark. The high power of the 2 x 2.4-amp connection enables even larger devices such as large smartphones and tablets to use its fast charging mode. The DUCI features a premium finish and is protected against electro-magnetic emissions.

¹ SIM card and mobile data usage are not included and must from a suitable mobile phone provider. Depending on the provider, additional costs may be incurred for data use.

Communication

This overview shows the options available for the individual products in our Communication range for our current vehicle models. Please contact your Volkswagen dealership for more information as to whether the options can be installed in your particular vehicle. Many of the products are available in different variants. See the **price list** for an overview of all available versions.



| | Page | Arteon | Beetle Beetle Cabriolet | Golf | Golf Estate | Golf Sportsvan | Jetta | Passat | Passat Estate | Polo | Scirocco | Sharan | T-Cross | T-Roc | Tiguan | Tiguan Allspace | Touareg | Touran | up! | |
|---|----------|----------------|----------------------------|----------------|----------------|----------------|----------------|----------------|----------------|-----------------|----------------|----------------|----------------|----------------|----------------|-----------------|----------------|----------------|----------------|--|
| | | f. MY. 2017 | f. MY. 2017 | f. MY. 2017 | f. MY. 2017 | f. MY. 2017 | f. MY. 2014 | f. MY. 2019 | f. MY. 2019 | f. MY. 2018 | f. MY. 2014 | f. MY. 2011 | f. MY. 2019 | f. MY. 2018 | f. MY. 2017 | f. MY. 2018 | f. MY. 2018 | f. MY. 2016 | f. MY. 2017 | |
| INFOTAINMENT | | | | | | | | | | | | | | | | | | | | |
| Travel and comfort system | | | | | | | | | | | | | | | | | | | | |
| - Base module | 68 | | | | | | | | | | | | | | | | | | | |
| - Tablet holder for iPad 2-4 | 68 | | | | | | | | | | | | | | | | | | | |
| - Tablet holder for iPad Air 1-2 | 68 | | | | | | | | | | | | | | | | | | | |
| - Tablet holder for iPad mini | 68 | | | | | | | | | | | | | | | | | | | |
| - Tablet holder for Samsung Galaxy Tab 3/4 10.1 | 68 | | | | | | | | | | | | | | | | | | | |
| - Action camera holder ³ | 68 | | | | | | | | | | | | | | | | | | | |
| - Universal tablet holder | 68 | | | | | | | | | | | | | | | | | | | |
| Safety cases for attaching to the universal tablet holder¹³ | | | | | | | | | | | | | | | | | | | | |
| - Safety case for iPad Mini 4 | Not ill. | | | | | | | | | | | | | | | | | | | |
| - Safety case for Samsung Galaxy | Not ill. | | | | | | | | | | | | | | | | | | | |
| - Safety case for iPad Air 2 | 68 | | | | | | | | | | | | | | | | | | | |
| Plug & Play Sound System | | | | | | | | | | | | | | | | | | | | |
| - For the spare wheel well | 34 | ○ | ● | ● ⁵ | ● ⁴ | ● | ● | ● | ● | ● ¹¹ | ● | ○ | ● | ● | ● | ○ | ○ | ● | ○ | |
| - For the luggage compartment | 34 | ○ | ● | ● ⁵ | ● ⁴ | ● | ● | ● | ● | ● ¹¹ | ● | ○ | ● | ● | ● | ○ | ○ | ● | ○ | |

¹ See the price list for an overview of all available versions.

² Only in conjunction with the "Composition Media" radio or "Discover Media" navigation function

³ Only in conjunction with the base module for travel and comfort system. You can find the complete travel and comfort system on pages 82-69.

⁴ Also for the Golf Alltrack

⁵ Also for the Golf GTI and Golf GTD

⁶ Also for the Golf GTE and e-Golf

⁷ Also for the Golf GTD Estate

⁸ Also for the Passat GTE

⁹ Also for the Passat GTE Estate

¹⁰ Also for the Passat Alltrack

¹¹ Also for the Polo GTI

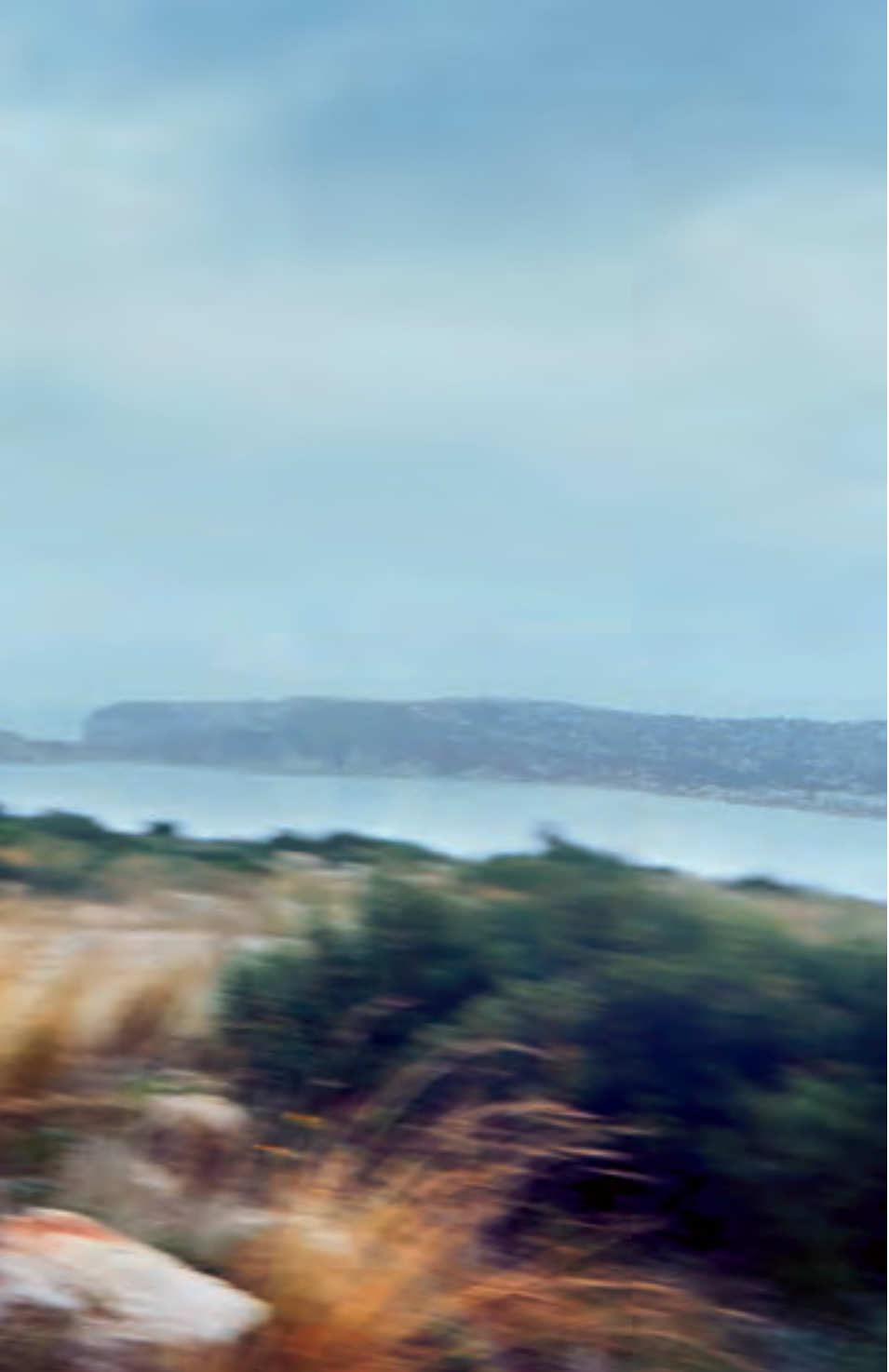
¹² 30 cm version only

¹³ Only in conjunction with the universal tablet holder

| | Page | Arteon | Beetle Beetle Cabriolet | Golf | Golf Estate | Golf Sportsvan | Jetta | Passat | Passat Estate | Polo | Scirocco | Sharan | T-Cross | T-Roc | Tiguan | Tiguan Allspace | Touareg | Touran | up! | |
|--|----------|--|----------------------------|------------------|----------------|----------------|----------------|----------------|-------------------|-----------------|----------------|----------------|----------------|----------------|----------------|-----------------|----------------|----------------|----------------|--|
| | | f. MY. 2017 | f. MY. 2017 | f. MY. 2017 | f. MY. 2017 | f. MY. 2017 | f. MY. 2014 | f. MY. 2019 | f. MY. 2019 | f. MY. 2018 | f. MY. 2014 | f. MY. 2011 | f. MY. 2019 | f. MY. 2018 | f. MY. 2017 | f. MY. 2018 | f. MY. 2018 | f. MY. 2016 | f. MY. 2017 | |
| MIB PQ navigation system retrofit option to Discover Media ¹ | 36 | ○ | ● | ○ | ○ | ○ | ● | ○ | ○ | ○ | ● | ● | ○ | ○ | ○ | ○ | ○ | ○ | ○ | |
| MIB/MQB navigation retrofit option from Composition Media to Discover Media ¹ | Not ill. | ○ | ○ | ● ⁵ | ● | ● | ○ | ○ | ○ | ● ¹¹ | ○ | ○ | ○ | ○ | ● | ● | ○ | ● | ○ | |
| RMT 400N MP3 radio navigation system | 37 | For vehicles with radio/navigation systems up to and including Generation 3. Not suitable for vehicles with MIB. | | | | | | | | | | | | | | | | | | |
| RMT 450N MP3 radio navigation system | 37 | For vehicles with MIB PQ from week 22/2015 | | | | | | | | | | | | | | | | | | |
| Voice control ² | | | | | | | | | | | | | | | | | | | | |
| - For Composition Media radio | 37 | ● | ● | ● ^{5,6} | ● | ● | ○ | ○ | ○ | ● ¹¹ | ○ | ○ | ● | ● | ● | ● | ○ | ○ | ○ | |
| - For Discover Media navigation | 37 | ● | ● | ● ^{5,6} | ● | ● | ● | ○ | ○ | ● ¹¹ | ● | ● | ● | ● | ● | ● | ○ | ● | ○ | |
| CarStick LTE | 37 | ● | ● | ● ^{5,6} | ● ⁴ | ● | ● | ○ | ○ | ● ¹¹ | ● | ● | ● | ● | ● | ● | ○ | ● | ○ | |
| DUCI, double USB charging adapter | 37 | ● | ● | ● ⁵ | ● ⁴ | ● | ● | ● ⁸ | ● ^{9,10} | ● ¹¹ | ● | ● | ● | ● | ● | ● | ● | ● | ● | |
| MOBILE COMMUNICATION | | | | | | | | | | | | | | | | | | | | |
| AppConnect activation document | 35 | ● | ● | ● | ● | ● | ● | ○ | ○ | ● ¹¹ | ● | ● | ● | ● | ● | ● | ○ | ● | ○ | |
| Premium connection cable | | | | | | | | | | | | | | | | | | | | |
| - USB-A to Micro-USB (30 cm/70 cm) | 35 | Use depends on the vehicle's equipment | | | | | | | | | | | | | | | | | | |
| - USB-A to Apple Lightning (30 cm/70 cm) | 35 | Use depends on the vehicle's equipment | | | | | | | | | | | | | | | | | | |
| - USB-A to USB-C (30 cm/70 cm) | Not ill. | Use depends on the vehicle's equipment | | | | | | | | | | | | | | | | | | |
| - USB-C to Micro-USB (30 cm/70 cm) | 35 | Use depends on the vehicle's equipment | | | | | | | | | | | | | | | | | | |
| - USB-C to Apple Lightning (30 cm/70 cm) | Not ill. | Use depends on the vehicle's equipment | | | | | | | | | | | | | | | | | | |
| - USB-C to USB-B (30 cm/70 cm) | Not ill. | Use depends on the vehicle's equipment | | | | | | | | | | | | | | | | | | |
| - USB-C to USB-A socket (30 cm/70 cm) | 35 | Use depends on the vehicle's equipment | | | | | | | | | | | | | | | | | | |



Illustration shows: **Cross bars** page 45, **surfboard carrier** page 46.



A takeaway guarantee right up my street.

"I don't want to spend ages figuring out whether it will work out. I want it to work and I want to be sure. With Volkswagen Accessories transport systems, I don't have to worry. The ideal solution for all the important things that I want with me on the road."

→ **Want more flexibility?**

Add an extra special touch to your Volkswagen: in the Volkswagen vehicle catalogues, you will find our range of tailored aerodynamic and design solutions, as well as individual accessories for your specific vehicle model.



Illustration shows: **Cross bars** page 45, **roof box** page 48, **Merano wheels** page 22.

Quality is when it just fits.

For all those who want more: even more.

More intelligent transport options, for instance. Or simply more of the proven Volkswagen Genuine Accessories quality. We know that this trust is not simply granted to our Genuine parts, but it has to be earned again and again, day after day. By using materials which simply work perfectly together, designing products which simply look better, and providing functions which simply open up additional opportunities. In short: by making good things better every day. More beautiful, more functional, more comfortable.

Uncompromising satisfaction.

Harder, stronger, further, more – the Volkswagen testing procedures for transport systems go above and beyond the legally prescribed requirements. In terms of materials, in the laboratory and finally on the test track. Only 100% top quality products earn the Volkswagen Genuine name. No compromises.

Laboratory tests: Corrosion test, UV resistance, environmental compatibility and many additional laboratory tests examine all the relevant material properties. Certain products are exposed to extreme temperatures in climatic chamber tests. To pass, the functionality of the components must remain unimpaired whatever the conditions.

Endurance: Whether over short distances, at high speeds or along demanding routes – we test our products' durability under continuous load conditions. The special road endurance test is carried out using the maximum permissible load and a variety of different testing profiles.

Test track: Our test drives with maximum forward and side to side acceleration, produced by weaving around obstacles, hard braking and by driving on cobblestone surfaces, subject the transport accessories to tough test conditions over and over again.

Volkswagen Accessories.

Because Genuine quality is always worthwhile.



→ Genuine quality is always worthwhile:

- Made-to-measure
- Simple installation
- Sophisticated system solutions
- High design standards

City Crash test.

Because safety matters.



Volkswagen's in-house crash tests are carried out at speeds and acceleration rates higher than those required under the DIN 75302 and ISO/PAS 11154 norms and the "City Crash" ¹ test – because Volkswagen believes that its own "City Crash Plus" tests at 30 km/h and with a 20% overload on the roof are more realistic than the standards set by DIN and ISO. The City Crash test simulates a rear-end collision in the inner city at a moderate speed of approximately 17 km/h. Although carried out by "Stiftung Warentest" and the "ADAC", it is not a legal requirement in Germany.





01 Volkswagen Genuine roof bars: Stay well equipped when on the move – with the Volkswagen Accessories support systems. These all use the made-to-measure, aerodynamically-shaped aluminium profile roof bars as a base for attaching fittings to the vehicle roof, including surfboard, bicycle, ski and snowboard carriers or our practical roof boxes. The roof bars come fully pre-assembled and are not only City Crash¹-tested, but have also passed the even stricter requirements of the Volkswagen City Crash Plus test. The easy-to-install aerodynamic profile minimises wind noise. Cross bars are used as the base system for vehicles with roof rails (see figure 02).

02 Volkswagen Genuine cross bars: The custom-fit cross bars are made from aerodynamic aluminium profiles and are not only City Crash¹-tested but have also passed the even stricter requirements of the Volkswagen City Crash Plus test. They form a robust yet light base system for all roof attachments, and can be mounted onto the roof rails quickly and easily. The anti-theft locking device protects you from any nasty surprises. Roof bars are used as the base system for vehicles without roof rails (see figure 01).

03 Volkswagen Genuine storage bag for roof bars and cross bars: This robust storage bag with the Volkswagen logo is suitable for all Volkswagen Genuine roof bars and cross bars. The length of the bag is adjustable. There is also an additional compartment for storing the installation instructions and installation wrench.



¹City Crash-tested in accordance with ISO/PAS 11154

→ PRACTICAL

The ski and snowboard carriers can be loaded and unloaded easily thanks to the practical pull-out function.



01



02



03

01 Surfboard carrier: Get your surfboard safely to its destination. The rubber-coated surfboard carrier and special rubber protective covers for the metal clamps on the tie downs provide extra protection during transport. Suitable for one surfboard with a two-piece mast.

02 Volkswagen Genuine kayak carrier: No bouncing, no slipping. Developed for kayaks weighing up to 25 kg, this carrier adapts to suit the shape of the vessel. Four moveable rubber supports secure the kayak during transport. And strong tensioning straps ensure it stays firmly in place.

03 Volkswagen Genuine "Comfort" ski and snowboard carrier: The aerodynamically designed aluminium ski and snowboard carrier is easy to install on cross bars or roof bars. The practical pull-out function allows the ski carrier to be loaded and unloaded with ease, while the extra-large opening buttons can even be used when you're wearing thick gloves. The ski and snowboard carrier is also suitable for transporting wakeboards and is available without the pull-out function. See the price list for an overview of all available versions.

04 Fork-mount bicycle carrier: Light, elegant and practical to use. This lockable bicycle carrier with a curving, aluminium wheel rail features an easily adjustable quick-fastening system for all types of bicycle forks. The carrier can be attached to the roof bars or cross bars easily, ensuring your bicycle is ideally transported with its convenient quick-action clamp for the rear wheel. An adapter for 20 mm diameter quick-release axles is included.

! NOTE

For technical data relating to the bicycle carriers, please refer to page 56.



05 Volkswagen Genuine bicycle carrier: Transport your bicycle reliably, steadily and upright on the roof of your Volkswagen using the Volkswagen Genuine bicycle carrier. The frame carrier and wheel rail have been designed to move the bicycle into the correct position automatically, and keep it there. The innovative torque limiter rotary knob controls the torque on the bicycle frame. The frame carrier has large soft pads to protect the bicycle frame. The wheels are held firmly in place using diagonal retaining straps with quick-action tensioners. The bicycle can be locked to the bicycle carrier and the bicycle carrier to the roof bars or cross bars. It can be switched from one side of the vehicle to the other quickly and easily, without additional tools, and meets Volkswagen's high test standards having passed the City Crash Plus¹.



¹City Crash-tested in accordance with ISO/PAS 11154



01

01 Volkswagen Genuine "Comfort" roof box in Black, gloss: The Volkswagen Genuine "Comfort" roof box has an optimised, aerodynamic design that largely eliminates unpleasant noises when driving. It impresses with its sophisticated, pre-mounted quick mounting mechanism. The box is equipped with the innovative "DuoLift" system that enables the box to be opened comfortably from both sides. Three internal tensioning straps prevent the load from shifting. The roof box is fitted with a theft-resistant 3-point central locking system. At up to 2.30 m long (Comfort 460), it is ideal for transporting items such as skis and snowboards. The roof box is available with a capacity of 340 or 460 litres.

02 "Basic" roof box in Black, matt: The aerodynamically-optimised shape of the "Basic" roof box coordinates with the modern design lines of the latest Volkswagen models. It significantly reduces unpleasant noise while driving. The box opens from one side and is equipped with a 2-lock system. The Comfort sliding fitting system enables you to fit the roof box onto the cross bars or the roof bars in just a few easy steps. The roof box is available with a capacity of 340 or 460 litres.

03 "Urban Loader" roof box: The "Urban Loader" roof box with expandable load capacity provides additional cargo space and is perfectly suited for transporting shopping, bags, suitcases, pushchairs and sports equipment, along with many other everyday necessities. The capacity of the roof box can be quickly and easily increased to 500 litres depending on what you are transporting. The zip fastener enables it to be opened, loaded and unloaded on both sides. The intelligent jointed steel frame with two springs makes the box easy to open and close.

04 Volkswagen Genuine ski bag: This practical ski bag can be used to protect and transport up to four pairs of skis and poles in the roof box or the interior using a belt clipped into the belt buckle.

! NOTE

With the innovative DuoLift system, the roof box can be opened easily from both sides.



02

An overview of all roof boxes



| Model | Volkswagen Genuine "Comfort 340" roof box | Volkswagen Genuine "Comfort 460" roof box | Roof box "Basic 340" | Roof box "Basic 460" | Roof box "Urban Loader" |
|-----------------------|---|---|----------------------|----------------------|-------------------------|
| Colour | Black, gloss | Black, gloss | Black, matt | Black, matt | Black, matt |
| Max. capacity [l] | 340 | 460 | 340 | 460 | 300-500 (variable) |
| Length, external [mm] | 1900 | 2300 | 1900 | 2300 | 1408 |
| Height [mm] | 390 | 390 | 390 | 390 | 259-517 (variable) |
| Width [mm] | 750 | 750 | 750 | 750 | 886 |
| Product weight [kg] | 19 | 21 | 19 | 21 | 15 |
| Load capacity [kg] | 75 | 75 | 50 | 75 | 50 |
| Mounting system | Pre-assembled quick-fastening system in T-groove rail | Pre-assembled quick-fastening system in T-groove rail | T-groove rail | T-groove rail | U-shaped bracket |

In vehicles with rod aerials, the aerial may come into contact with the roof box depending on the vehicle model and aerial length. The aerial may have to be unscrewed if necessary. Depending on the vehicle configuration or model selection, the roof box may collide with the boot lid when open due to the different lengths. Please observe the vehicle-dependent load conditions.

04



Scan the QR code and experience our many roof box options with moving images.



03



03





01



02

→ **QUICK-ACTION CLAMP**

Pre-set quick-action clamp for a secure and easy way to clamp the supporting bar!

Scan the QR code and experience the transport options as moving pictures.



01/02/03 Volkswagen Genuine "Premium" bicycle carrier: The Volkswagen Genuine "Premium" bicycle carrier for transporting two bicycles or electric bikes impresses with its very lightweight design and new, innovative attachment mechanism. The carrier fits onto the ball head automatically; all you have to do is slide it on vertically and fold it down into place. The newly patented lever-free locking mechanism allows for easy, effortless assembly. And the innovative, removable spacers with anti-theft protection make the carrier very simple to use. It also features a foot pedal that allows you to fold the carrier open to a wide angle. This keeps the luggage compartment fully accessible, even on vehicles with large boot lids. The carrier can be folded down completely to a very small size and stowed away in the luggage compartment. The Volkswagen Genuine number plate carrier with Volkswagen lettering adds the perfect finishing touch to the "Premium" carrier. A transport bag for protecting the carrier and a loading ramp to make it easier to load heavy bicycles are also available as an option. In certain vehicles, the carrier can be stowed in the spare wheel well to save space.

01 Volkswagen Genuine loading ramp: The loading ramp acts as a loading aid, enabling heavy bicycles to be easily rolled up onto the towing bracket bicycle carrier. When not in use, the rail can be folded up and transported in the provided storage bag inside the vehicle. The ramp can be used with the Volkswagen Genuine "Premium", "Compact II", "Compact III", "Basic Flex" and "Basic" bicycle carriers.



→ UNIQUE FEATURES

02 90° folding function: with the foot pedal, the carrier can be folded out so that it is extra wide. This ensures the luggage compartment can still be accessed, even in vehicles with large boot lids.

03 To save even more space, the Volkswagen Genuine "Premium bicycle carrier can be transported in the spare wheel well in the Golf VII, Golf VII Estate, Golf Sportsvan, Passat VIII Estate, Passat VIII saloon and the T-Roc. To make sure the bicycle carrier can be transported safely in the spare wheel well, we recommend using the optional mounting kit (not illustrated).

04 The carrier folds down to a compact size for easy storage in the luggage compartment.

05 The optional transport bag helps you transport the "Premium" bicycle carrier and "Basic" bicycle carrier cleanly and safely.



! NOTE

The technical information for all bicycle carriers is provided on page 54. Towing brackets and electrical installation kits can be found on page 55.



01



02

01/02/03/04 Volkswagen Genuine "Compact II" bicycle carrier: Once mounted onto the towing bracket with its innovative quick-release mechanism, this lightweight, compact folding Volkswagen Genuine "Compact II" bicycle carrier can transport two bicycles or electric bikes weighing up to 60 kg. Using the large foot pedal, the bicycle carrier can also be folded downwards, even when loaded, so that the boot lid always remains accessible. The bicycles are fixed in place with lockable sliding spacers and a convenient ratchet system for the tyres. The carrier folds down to a compact size for easy storage in the luggage compartment. The "Compact III" bicycle carrier for up to three bicycles is also available. A practical storage bag is included.

05/06 Volkswagen Genuine "Basic Flex" bicycle carrier: This flexible, expandable Volkswagen Genuine "Basic Flex" towing bracket bicycle carrier is suitable for transporting two or three bicycles. It can be folded down while the bicycles are attached using a foot pedal, and the extra-large folding angle means you can still open the luggage compartment. The large distance between the rails means that the carrier is ideal for use with electric bikes. The attachment mechanism is very user-friendly – simply place the carrier onto the towing bracket of your vehicle, push down the hand lever and lock into place. The innovative, removable spacers with anti-theft locking mechanisms and quick-release fasteners make the carrier even easier to use. Equipped with the Volkswagen Genuine number plate carrier and the easy-folding frame, the carrier can be quickly folded up and stored compactly. An expansion kit for transporting a third bicycle is available as an option (see figure 06).

→ QUICK-ACTION CLAMP

Pre-set quick-action clamp for a secure and easy way to clamp the supporting bar!



03



04



05



08



10



06



09

→ **SPACE-SAVING**

To save even more space, the Volkswagen Genuine "Basic" bicycle carrier can be stowed in the spare wheel well of the Golf VII, Golf VII Estate, Golf Sportsvan, Passat VIII Estate, Passat VIII Saloon and T-Roc during transport. To make sure bicycle carrier can be transported safely in the spare wheel well, we recommend using the optional mounting kit (not illustrated). You can also opt for the optional loading ramp and transport bag.



07

07 Expansion set for the "Basic Flex" bicycle carrier: This expansion set for the Volkswagen Genuine "Basic Flex" bicycle carrier enables you to add an additional bicycle rail if you need to transport another bike.

08/09 Volkswagen Genuine "Basic" bicycle carrier: The "Basic" bicycle carrier for two bicycles or electric bikes boasts both an incredibly lightweight design and an innovative attachment mechanism. The carrier fits onto the ball head automatically; all you have to do is slide it on vertically and fold it down into place. The patented lever-free locking mechanism ensures easy, effortless assembly. And the removable spacers with anti-theft protection make the carrier very simple to use. The carrier can be folded down completely to a very small size and stowed away to save space. The Genuine number plate carrier with Volkswagen lettering adds the perfect finishing touch to the "Basic" carrier.

10 Volkswagen Genuine "Comfort" boot lid bicycle carrier: This practical Volkswagen Genuine "Comfort" boot lid bicycle carrier is made from anodised aluminium profiles, and is designed to transport up to three bicycles. It is supplied pre-assembled, and is therefore very easy to install on your vehicle. The practical ratchet system and the comfortable distance between the rails makes it easy to fix the bicycles into place. The boot lid can still be opened freely when the bicycle carrier is attached (without bicycles). Includes anti-theft locking device. Unladen weight: 12 kg, maximum load-bearing capacity: 60 kg. Only for the Sharan.



Scan the QR code and experience the transport options with moving pictures.

! NOTE

The technical information for all bicycle carriers is provided on page 54. Towing brackets and electrical installation kits can be found on page 55.

Overview of all bicycle carriers for the towing bracket



Towing bracket bicycle carriers

| Model | "Premium" | "Compact II" | "Compact III" | "Basic Flex" |
|--|--|---|---|---|
| Max. number of bicycles | 2 | 2 | 3 | 2 (3 with optional expansion set) |
| Product weight [kg] | 13 | 14 | 16 | 14 |
| Max. load [kg] | 60 | 60 | 54 | 60 |
| Bicycle rail spacing | 220 mm | 220 mm | 190/180 mm | 220 mm |
| Max. axle spacing | 1300 mm | 1250 mm | 1250 mm | 1250 mm |
| Bicycle frame diameter | Up to 75 mm round tube or 75 x 45 mm oval tube | Up to 80 mm round tube or 80 x 45 mm oval tube | Up to 80 mm round tube or 80 x 45 mm oval tube | Up to 75 mm round tube or 75 x 45 mm oval tube |
| Dimensions [H x W x D] in cm | 69 x 118 x 56 | 76 x 114 x 65 | 76 x 114 x 79 | 77 x 115 x 65 |
| Folded dimensions [H x W x D] in cm | 20 x 61 x 60 | 24 x 58 x 64 | 24 x 58 x 77 | Not foldable |
| Folding function using the foot pedal (also with bicycles) | ● | ● | ● | ● |
| Anti-theft protection, lockable | ● | ● | ● | ● |
| Number plate carrier with handle | ● | ● | ● | ● |
| Plug connection, 13-pin | ● | ● | ● | ● |
| Transport bag included in the scope of delivery | ○ | ● | ● | ○ |
| Removable frame carrier | ● | ○ | ○ | ● |
| Optional accessories | Loading ramp, transport bag, mounting kit | Loading ramp | Loading ramp | Expansion kit for a third bicycle, Loading ramp |
| Optional equipment | <ul style="list-style-type: none"> - Lever-free assembly - Can be transported in the spare wheel well of certain vehicles - Large 90° folding angle, also for vehicles with large boot lids | | | <ul style="list-style-type: none"> - Large 90° folding angle, also for vehicles with large boot lids |

Please observe the vehicle-dependent vertical drawbar load.



"Basic"

| |
|---|
| 2 |
| 12 |
| 60 |
| 220 mm |
| 1300 mm |
| Up to 75 mm round tube or 75 x 45 mm oval tube |
| 118 x 77 x 65 |
| 65 x 25 x 64 |
| ○ |
| ● |
| ● |
| ● |
| ○ |
| ● |

Loading ramp, transport bag,
mounting kit

- Lever-free assembly
- Can be transported in the spare wheel well of certain vehicles



01



02



03

Volkswagen Genuine towing bracket including electrical installation kit: Whether you want to tow a boat or a caravan, or just need additional storage space – if you want to transport a trailer, you need a towing bracket. With the custom-fit, retrofittable Volkswagen Genuine towing brackets and vehicle-specific electrical installation kits, you can enjoy a full range of products perfectly in line with one another. An activation document with an individual activation code enables the system to be integrated fully into the vehicle's electronics system. Electricity is supplied via the vehicle-specific Volkswagen Genuine electrical installation kit (13-pin). The interaction between all components and the integration into the vehicle environment ensure the trailers and carrier systems run reliably and facilitate trailer stabilisation system support, stand-by current and calibration with countless assistance systems. Fixed, removable and swivelling versions of the towing brackets are available depending on the vehicle model.

- 01 Removable
- 02 Fixed
- 03 Swivelling

Overview of all bicycle carriers and boot lid carriers



Roof-mounted bicycle carriers

| Model | Bicycle carriers | Fork-mount bicycle carriers |
|--|---|-----------------------------|
| Max. number of bicycles | 1 | 1 |
| Product weight [kg] | 4.2 | 2.5 |
| Max. load [kg] | 20 | 17 |
| Bicycle mount | Frame/wheel | Front wheel fork/rear wheel |
| Bicycle frame diameter | 22–80 mm round tube / 80 x 100 mm oval tube | All |
| Suitable for tyre widths | 3-inch | 3-inch |
| Compatible with quick-release axles | All | 20 mm |
| Dimensions [L x W x H] in cm | 145 x 32 x 9 | 110 x 22 x 12 |
| Adjustable quick-action tensioner for wheels | ● | ● |
| Lockable: bicycle onto holder and holder onto roof bars/cross bars | ● | ● |
| Suitable for bicycles with disc brakes | ● | ● |
| Suitable for roof racks with T-grooves of 20 x 20 mm | ● | ● |
| Suitable for roof racks with square profiles | ○ | ● |

Other

- Quick and easy mounting for the bicycle frame thanks to the rotary knob with built-in torque limiter
- Can be attached to the vehicle roof facing either direction
- Easily moved, without using tools

- Can be attached to the vehicle roof facing either direction
- T-groove adapter (20 × 20 mm) included



Bicycle carrier for the boot lid (Sharan only)

Model

"Comfort"

| | |
|--|---|
| Vehicle models | Sharan (successor) 2011 – 2015, Sharan (successor facelift) from 2015 |
| Max. number of bicycles | 3 |
| Product weight [kg] | 12 |
| Max. load [kg] | 60 |
| Wheel rail width [mm] | 50 |
| Bicycle frame diameter | Up to 80 mm round tube or 80 x 45 mm oval tube |
| Dimensions [L x W x H] in cm | 720 x 355 x 1160 |
| Wheel mount | Tensioning straps |
| Locks | 2nd and 3rd spacers, lockable |
| Boot lid can open with the carrier attached | ● |
| Electric boot lid can open with the carrier attached | ○ |

Other

Paintwork protection film included

Please observe the vehicle-dependent load conditions.



Transport

This overview shows the options available for the individual products in our Transport range for our current vehicle models. Please contact your Volkswagen dealership for more information as to whether the options can be installed in your particular vehicle. Many of the products are available in different variants. See the **price list** for an overview of all available versions.



| | Page | Arteon | Beetle Beetle Cabriolet | Golf | Golf Estate | Golf Sportsvan | Jetta | Passat | Passat Estate | Polo | Scirocco | Sharan | T-Cross | T-Roc | Tiguan | Tiguan Allspace | Touareg | Touran | up! | |
|--|----------|----------------|----------------------------|---------------------|-------------------|-----------------|----------------|------------------|---------------------|-----------------|----------------|----------------|----------------|-----------------|----------------|-----------------|----------------|----------------|----------------|---|
| | | f. MY. 2017 | f. MY. 2017 | f. MY. 2017 | f. MY. 2017 | f. MY. 2017 | f. MY. 2014 | f. MY. 2019 | f. MY. 2019 | f. MY. 2018 | f. MY. 2014 | f. MY. 2011 | f. MY. 2019 | f. MY. 2018 | f. MY. 2017 | f. MY. 2018 | f. MY. 2018 | f. MY. 2016 | f. MY. 2017 | |
| CARRIER SYSTEMS | | | | | | | | | | | | | | | | | | | | |
| Roof bars | 45 | ● | ○ | ● ^{4,5} | ○ | ○ | ● | ● ^{8,9} | ○ | ● ¹¹ | ● | ○ | ○ | ○ | ○ | ○ | ○ | ○ | ○ | ● |
| Cross bars ¹ | 45 | ○ | ○ | ○ | ● ³ | ● | ○ | ○ | ● ^{7,9} | ○ | ○ | ● | ● | ● | ● | ● | ● | ● | ● | ○ |
| Storage bag for roof bars/cross bars | 45 | ● | ○ | ● ^{4,5,12} | ● ³ | ● ¹² | ● | ● ¹² | ● ^{7,9,12} | ● ¹¹ | ● | ● | ● | ● | ● | ● | ● | ● | ● | ● |
| "Basic" bicycle carrier for the Towing bracket ¹² | 53 | ● | ○ | ● ^{5,12} | ● ^{3,12} | ● ¹² | ● | ● ¹² | ● ^{7,12} | ● ¹¹ | ○ | ● | ● | ● ¹² | ● | ● | ● | ● | ○ | |
| "Basic Flex" bicycle carrier for the towing bracket | 52 | ● | ○ | ● ⁴ | ● ³ | ● | ● | ● | ● ⁷ | ● ⁷ | ○ | ● | ● | ● | ● | ● | ● | ● | ○ | |
| "Basic Flex" expansion kit for a third bicycle | 53 | ● | ○ | ● ⁴ | ● ³ | ● | ● | ● | ● ⁷ | ● ⁷ | ○ | ● | ● | ● | ● | ● | ● | ● | ○ | |
| "Compact II" bicycle carrier for the towing bracket | 52 | ● | ○ | ● ⁴ | ● ³ | ● | ● | ● | ● ⁷ | ● ⁷ | ○ | ● | ● | ● | ● | ● | ● | ● | ○ | |
| "Compact III" bicycle carrier for the towing bracket | Not ill. | ● | ○ | ● ⁴ | ● ³ | ● | ● | ● | ● ⁷ | ● ⁷ | ○ | ● | ● | ● | ● | ● | ● | ● | ○ | |
| "Premium" bicycle carrier for the towing bracket ¹² | 51 | ● | ○ | ● ⁴ | ● ³ | ● ¹² | ● | ● | ● | ● | ○ | ● | ● | ● | ● | ● | ● | ● | ○ | |
| Transport bag for the "Premium" and "Basic" bicycle carrier | 51 | ● | ○ | ● ⁴ | ● ³ | ● | ● | ● | ● | ● | ○ | ● | ● | ● | ● | ● | ● | ● | ○ | |
| Loading ramp for the "Premium", "Basic Flex", "Basic", "Compact II" and "Compact III" bicycle carriers | 51 | ● | ○ | ● ⁴ | ● ³ | ● | ● | ● | ● ⁷ | ● | ○ | ● | ● | ● | ● | ● | ● | ● | ○ | |
| Mounting kit for the "Premium" and "Basic" bicycle carrier | Not ill. | ○ | ○ | ● | ● | ● | ○ | ● | ● | ○ | ○ | ○ | ○ | ● | ○ | ○ | ○ | ○ | ○ | |
| Boot lid bicycle carriers | 53 | ○ | ○ | ○ | ○ | ○ | ○ | ○ | ○ | ○ | ○ | ● | ○ | ○ | ○ | ○ | ○ | ○ | ○ | |

¹ For vehicles with roof rails

² Only in conjunction with roof bars or cross bars

³ Also for the Golf Alltrack

⁴ Also for the Golf GTI

⁵ Also for the Golf GTD, Golf GTE and e-Golf

⁶ Also for the Golf R

⁷ Also for the Passat Alltrack

⁸ Also for the Passat GTE

⁹ Also for the Passat GTE Estate

¹⁰ Also for the Golf GTD Estate

¹¹ Also for the Polo GTI

¹² Suitable for transportation in the spare wheel well: Golf VII (A7-5G), Golf VII Estate (A7-5G), Golf Sportsvan (A7-AM), Passat VIII Estate (B8-3G), Passat VIII saloon (B8-3G), T-Roc (MQB-A-2GA), Golf VII facelift (A7-GP-5G), Golf VII facelift Estate (A7-GP-5G), Golf Sportsvan facelift (A7-GP-AN)

| | Page | Arteon | Beetle Beetle Cabriolet | Golf | Golf Estate | Golf Sportsvan | Jetta | Passat | Passat Estate | Polo | Scirocco | Sharan | T-Cross | T-Roc | Tiguan | Tiguan Allspace | Touareg | Touran | up! |
|--|------|----------------|----------------------------|------------------|-------------------|----------------|----------------|----------------|--------------------|--------------------|----------------|----------------|----------------|----------------|----------------|-----------------|----------------|----------------|----------------|
| | | f. MY. 2017 | f. MY. 2017 | f. MY. 2017 | f. MY. 2017 | f. MY. 2017 | f. MY. 2014 | f. MY. 2019 | f. MY. 2019 | f. MY. 2018 | f. MY. 2014 | f. MY. 2011 | f. MY. 2019 | f. MY. 2018 | f. MY. 2017 | f. MY. 2018 | f. MY. 2018 | f. MY. 2016 | f. MY. 2017 |
| ROOF ATTACHMENTS ² | | | | | | | | | | | | | | | | | | | |
| Ski and snowboard carrier | 46 | ● | ○ | ● ^{4,5} | ● ^{9,10} | ● | ● | ● ⁸ | ● ^{7,8,9} | ● ^{7,8,9} | ● | ● | ● | ● | ● | ● | ● | ● | ● |
| Fork-mount bicycle carrier | 46 | ● | ○ | ● ^{4,6} | ● ³ | ● | ● | ● | ● ⁷ | ● ¹¹ | ● | ● | ● | ● | ● | ● | ● | ● | ● |
| Bicycle carrier | 47 | ● | ○ | ● ^{4,6} | ● ^{3,10} | ● | ● | ● | ● ⁷ | ● ¹¹ | ● | ● | ● | ● | ● | ● | ● | ● | ● |
| Surfboard carrier | 46 | ● | ○ | ● ^{4,5} | ● ^{3,10} | ● | ● | ● ⁸ | ● ^{7,8,9} | ● ¹¹ | ● | ● | ● | ● | ● | ● | ● | ● | ● |
| Kayak carrier | 46 | ● | ○ | ● ^{4,5} | ● ^{3,10} | ● | ● | ● ⁸ | ● ^{7,8,9} | ● ^{7,8,9} | ● | ● | ● | ● | ● | ● | ● | ● | ● |
| "Comfort" roof box, Black, gloss | | | | | | | | | | | | | | | | | | | |
| - Comfort 340: 340 l volume, 75 kg capacity | 48 | ● | ○ | ● ^{4,5} | ● ^{3,10} | ● | ● | ● ⁸ | ● ^{7,8,9} | ● ¹¹ | ● | ● | ● | ● | ● | ● | ● | ● | ● |
| - Comfort 460: 460 l volume, 75 kg capacity | 48 | ● | ○ | ● ^{4,5} | ● ^{3,10} | ● | ● | ● ⁸ | ● ^{7,8,9} | ● ¹¹ | ● | ● | ● | ● | ● | ● | ● | ● | ● |
| "Basic" roof box, Black, matt | | | | | | | | | | | | | | | | | | | |
| - Basic 340: 340 l volume, 50 kg capacity | 48 | ● | ○ | ● ^{4,5} | ● ^{3,10} | ● | ● | ● ⁸ | ● ^{7,8,9} | ● | ● | ● | ● | ● | ● | ● | ● | ● | ● |
| - Basic 460: 460 l volume, 50 kg capacity | 48 | ● | ○ | ● ^{4,5} | ● ^{3,10} | ● | ● | ● ⁸ | ● ^{7,8,9} | ● ¹¹ | ● | ● | ● | ● | ● | ● | ● | ● | ● |
| "Urban Loader" roof box, 50 kg load capacity | | | | | | | | | | | | | | | | | | | |
| | 48 | ● | ○ | ● ^{4,5} | ● ^{3,10} | ● | ● | ● ⁸ | ● ^{7,8,9} | ● ¹¹ | ● | ● | ● | ● | ● | ● | ● | ● | ● |
| TOWING BRACKETS AND ELECTRICAL INSTALLATION KITS | | | | | | | | | | | | | | | | | | | |
| Detachable towing brackets | | | | | | | | | | | | | | | | | | | |
| - Inc. electrical installation kit, 13-pin, for vehicles without factory-fitted preparations | 55 | ○ | ○ | ● ^{4,5} | ● ^{3,10} | ● | ● | ● ⁸ | ● ^{7,9} | ● ¹¹ | ○ | ○ | ● | ● | ○ | ○ | ● | ● | ○ |
| - Inc. electrical installation kit, 13-pin, for vehicles with factory-fitted preparations | 55 | ○ | ○ | ● ^{4,5} | ● ^{3,10} | ○ | ○ | ○ | ○ | ○ | ○ | ○ | ○ | ○ | ○ | ○ | ○ | ○ | ○ |
| - Without electrical installation kit | 55 | ○ | ○ | ○ | ○ | ○ | ○ | ○ | ○ | ○ | ○ | ● | ○ | ○ | ○ | ○ | ○ | ○ | ○ |

| | Page | Arteon | Beetle Beetle Cabriolet | Golf | Golf Estate | Golf Sportsvan | Jetta | Passat | Passat Estate | Polo | Scirocco | Sharan | T-Cross | T-Roc | Tiguan | Tiguan Allspace | Touareg | Touran | up! |
|---|------|-----------------|----------------------------|------------------|-------------------|----------------|----------------|--------------------|--------------------|----------------|----------------|----------------|----------------|----------------|----------------|-----------------|----------------|----------------|----------------|
| | | f. MY. 2017 | f. MY. 2017 | f. MY. 2017 | f. MY. 2017 | f. MY. 2017 | f. MY. 2014 | f. MY. 2019 | f. MY. 2019 | f. MY. 2018 | f. MY. 2014 | f. MY. 2011 | f. MY. 2019 | f. MY. 2018 | f. MY. 2017 | f. MY. 2018 | f. MY. 2018 | f. MY. 2016 | f. MY. 2017 |
| Towing bracket, fixed | | | | | | | | | | | | | | | | | | | |
| - Inc. electrical installation kit, 13-pin, for vehicles without factory-fitted preparations | 55 | ○ | ○ | ● ^{4,5} | ● ^{3,10} | ● | ○ | ● ^{7,8,9} | ● ^{7,8,9} | ● | ○ | ○ | ● | ● | ● | ● | ○ | ● | ○ |
| - Inc. electrical installation kit, 13-pin, for vehicles with factory-fitted preparations | 55 | ○ | ○ | ● ^{4,5} | ● ^{3,10} | ○ | ○ | ○ | ○ | ○ | ○ | ○ | ○ | ○ | ○ | ○ | ○ | ○ | ○ |
| - Without electrical installation kit | 55 | ○ | ○ | ○ | ○ | ○ | ○ | ○ | ○ | ○ | ○ | ● | ○ | ○ | ○ | ○ | ○ | ○ | ○ |
| Swivelling towing bracket | | | | | | | | | | | | | | | | | | | |
| - Inc. electrical installation kit, 13-pin, for vehicles without factory-fitted preparations | 55 | ● | ○ | ○ | ○ | ○ | ○ | ○ | ○ | ○ | ○ | ○ | ○ | ○ | ● | ● | ● | ○ | ○ |
| Electrical installation kit for the towing bracket, 13-pin, for vehicles without factory-fitted preparations | 55 | ○ | ○ | ○ | ○ | ○ | ○ | ○ | ○ | ○ | ○ | ● | ○ | ○ | ○ | ○ | ○ | ○ | ○ |
| LUGGAGE SECURING SYSTEMS | | | | | | | | | | | | | | | | | | | |
| Ski bag | 48 | For any vehicle | | | | | | | | | | | | | | | | | |

¹ For vehicles with roof rails

² Only in conjunction with roof bars or cross bars

³ Also for the Golf Alltrack

⁴ Also for the Golf GTI

⁵ Also for the Golf GTD, Golf GTE and e-Golf

⁶ Also for the Golf R

⁷ Also for the Passat Alltrack

⁸ Also for the Passat GTE

⁹ Also for the Passat GTE Estate

¹⁰ Also for the Golf GTD Estate

¹¹ Also for the Polo GTI

¹² Can be stowed in the spare wheel well





Illustration shows: Luggage compartment plug-in module page 66.



Comfort modules made perfectly for me.

“My Volkswagen, my rules. And they include a certain standard of comfort. So, it’s good to know that Volkswagen Accessories has such a wide range of options for compiling your own package of comfort features. Maximum freedom, maximum benefits – that’s the way I like it.”

→ **Want more freedom?**

Add an extra special touch to your Volkswagen: in the Volkswagen vehicle catalogues, you will find our range of tailored aerodynamic and design solutions, as well as individual accessories for your specific vehicle model.



01 Volkswagen Genuine luggage compartment tray: The robust, durable and custom-fit Volkswagen Genuine luggage compartment tray with vehicle-specific lettering keeps your luggage compartment incredibly clean. The surrounding rim helps minimise the risk of liquids in the luggage compartment leaking out.

02 Volkswagen Genuine luggage compartment lining: Light, flexible, custom-made protection. The non-slip Volkswagen Genuine luggage compartment lining is designed to fit the contours of the luggage compartment perfectly and protect it from dirt and moisture. When not in use, it can be rolled up and easily stowed away to save space.

! NOTE

Before starting off, ensure any load is properly secured in the luggage compartment.



03



04



05

03 Volkswagen Genuine luggage net: So that everything stays where it belongs. The tear-resistant Volkswagen Genuine luggage net is ideal for all of those small and medium-sized items you prefer to keep stored safely away. The luggage net is attached to the standard lashing eyes in the luggage compartment.

04 Volkswagen Genuine boot liner: The wide-ribbed Volkswagen Genuine boot liner with vehicle model lettering is extremely hard-wearing and suitable for anything that tends to make a mess during transport, such as dirty shoes or plants. The liner protects the luggage compartment from dirt and features a smooth plastic surface to make it easy to clean. Depending on the vehicle model, the boot liner can be fitted with additional lids, partitioning elements, stretch bands and fastening hooks. Exact design may vary depending on the model.

05 Volkswagen Genuine reversible floor covering: Soft and gentle velour on one side and sturdy, anti-slip plastic nubs on the other. The custom-fit Volkswagen Genuine reversible floor covering has the right surface for all sensitive, dirty or damp goods. Some models include a robust protective cloth for the load sill. This can be folded out from the reversible covering as needed to help prevent scratches during loading and unloading. Depending on the vehicle, the rear seats can be folded down to form a full loading surface up to the front seats and covered with the folded out reversible mat. This is an effective way to avoid the rear seats getting dirty.

→ DETAIL

Once turned into place, the sturdy plastic studs on the rear side of the reversible floor covering ensure a perfect hold, so it can protect your vehicle from even heavy dirt and loads.



05



01



02



03

01 Volkswagen Genuine luggage compartment plug-in module: The Volkswagen Genuine luggage compartment plug-in module enables you to flexibly partition your vehicle's luggage compartment, preventing goods from slipping about. The luggage compartment plug-in module can be freely positioned along the outer edges of the luggage compartment floor. The plug-in module's telescopic rod also keeps the module firmly in place.

02 Volkswagen Genuine net partition: The Volkswagen Genuine net partition is fitted between the rear seat backrests and the headliner to separate the passenger compartment from the luggage compartment. It can also be used as a dog guard. The sturdy, black powder-coated steel grille can be easily and comfortably attached behind the rear bench seat. Assembly is simple and no holes have to be drilled. The luggage compartment cover can also be used with the net partition.

03 Volkswagen Genuine partition: Helps you keep the luggage compartment tidier. This practical Volkswagen Genuine partition can be fixed to the existing attachment points in just a few quick steps. Can only be used in conjunction with the net partition.

! NOTE

Before starting off, ensure any load is properly secured in the luggage compartment.





01



02



03

Modular travel and comfort system: Practical, comfortable and flexible. The modular travel and comfort system is a versatile solution that helps to keep your vehicle interior clean and tidy. It also ensures that important objects are always within easy reach for your rear bench seat passengers. The system consists of a base module which is fixed between the front seat headrest bars and various additional modules available separately. These include everything from a portable clothes hanger to a robust bag hook and an adjustable folding table with a drink holder¹. There are also swivelling tablet holders for models from various manufacturers and a flexible action camera mount. With the modular travel and comfort system, any breaks in the journey become a really comfortable experience.

- 01 Universal tablet holder with safety cases
- 02 Clothes hanger²
- 03 Bag hook²
- 04 Base module
- 05 Tablet holder for Apple iPad 2-4³

- 05 Tablet holder for Apple iPad Air 1-2³
(similar to the illustration)
- 06 Folding table with cup holder¹
- 07 Tablet holder for Apple iPad mini³
- 08 Tablet holder for Samsung Galaxy Tab 3/4 10.1³
- 09 Action camera holder

¹ The folding table with drink holder must be folded away during your journey if a passenger is seated on the rear bench seat behind it.

² Only usable if a passenger is not seated in the rear seat behind it.

³ iPad/iPad Air/iPad mini are registered trademarks of Apple Computer International. Galaxy Tab is a registered trademark of Samsung Electronics Co., Ltd.

! NOTE

One base, so many options: all of the different modules can be mounted easily onto the base holder and swapped out as required.



! NOTE

Complete flexibility: The swivelling axis enables the tablet to be used in both portrait and landscape mode.



! NOTE

Thanks to the swivelling, lockable arm and 360° rotating bracket, with degree information shown, you can align the camera with the area you wish to view.

Scan the QR code to experience the travel and comfort system with moving pictures.





01

01 "Volkswagen Edition" espresso machine and espresso pods: Ideal for espresso fans. You no longer have to find a service area to enjoy your coffee break. The mobile in-car espresso set means you always have your own little coffee bar on board. Simply stop for a break, connect the machine to the 12V socket inside your vehicle and get ready to enjoy a freshly brewed espresso. The set includes two break-proof espresso cups, a serviette and 25 espresso pods, along with an elegant and practical storage case for the set.

02 Volkswagen Genuine waste container: Get rid of sweet wrappers and chewing gum quickly and easily with the Volkswagen Genuine waste container. Simply place it in the drink holder, and remove it again when not required. The convenient way to keep the vehicle clean on long journeys.

! NOTE

The set can be easily and safely stored away in the storage bag for the espresso machine.



02



03



04

03 Volkswagen Genuine "Clean Solution" waste bag¹: No waste, no worries. The Volkswagen Genuine waste bag attaches to the headrest struts on the front seats. When a bag is taken out, a new one is automatically pulled into place. Delivery includes two rolls of waste bags, each with 50 bags.

04 Volkswagen Genuine cool and thermos box: The Volkswagen Genuine cool and thermos box helps you keep your snacks at the perfect temperature at all times. This energy efficiency class A++ box connects to a 12V/230V socket, either in the vehicle or at home. Two-litre bottles can be transported upright in the box, which has a capacity of approx. 25 litres. Includes battery discharge protection and a replacement insulating lid.

05 Volkswagen Genuine "Snakey" headrest hook¹: Twin pack of practical organisers for mounting on the front seat headrest struts. Simply hook your items on and off you go. Colour: Black.

06 Volkswagen Genuine clothes hanger²: Sometimes things just have to be crease-free. The stylish Volkswagen Genuine clothes hanger can be quickly and easily attached to the headrest struts on the front seats. Keeps your shirts, jackets and other similar items of clothing beautifully smooth.

07 Volkswagen Genuine LED reading light: The Volkswagen Genuine LED reading light enables your passengers to enjoy a comfortable level of light when travelling in the dark. The universal LED reading light is powered via the cigarette lighter and delivers a bright light with very low energy consumption. The on/off-switch, which bears the Volkswagen logo, is located on the rotating lamp head. The adjustable swan neck enables exact positioning of the light. Requires a 12V power socket.



05



06



07

¹ Not for vehicles with electric headrests

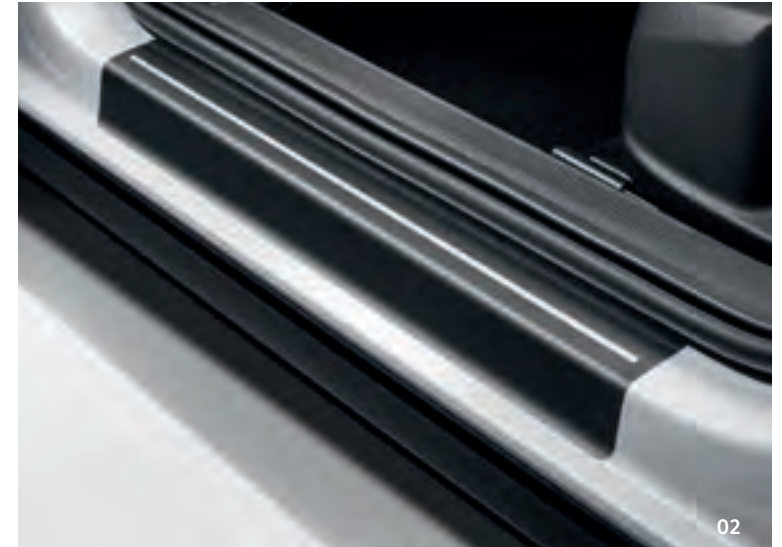
² Only usable if a passenger is not seated in the rear seat behind it.



01 Volkswagen Genuine load sill protection film, transparent: The practical, custom-fit load sill protection is made from transparent film and prevents damage when loading and unloading. Sticks onto the load sill on the rear bumper. Also available as a load sill protector in a stainless steel effect, see page 12.

02 Volkswagen Genuine sill panel trim film, black/silver: A detail that both looks good and does good – this film protects the paintwork on the heavily used door sills in the front and rear entrance areas from scratches and damage.

03 Volkswagen Genuine sill panel trim film, transparent: The transparent protective film acts like an invisible shield. It is designed to fit your vehicle perfectly, and can be applied to painted entry points. Scratches do not stand a chance and you can maintain your vehicle's appearance for a long time to come. Available for both front and rear.



! NOTE

Stainless steel or aluminium **sill panel trims** and the **load sill protection** in stainless steel look can be found on page 12 in the Sport and Design section.



04



05



06

04 Volkswagen Genuine LED number plate light: A real eye-catcher. This unique form of rear lighting makes your number plate even easier to see. LED technology means that this striking lighting system is both long-lasting and low-energy.

05 Volkswagen Genuine Park Distance Control, rear: The Volkswagen Genuine Park Distance Control is automatically activated when the vehicle is put into reverse. Four sensors and an acoustic warning signal help the driver reverse into parking spaces. Design may vary depending on the vehicle.

06 Volkswagen Genuine mudflaps: Protect your own vehicle and the one behind from flying dirt, dangerous stone impacts and spray with these extremely durable mudflaps. Available for both front and rear.



01



02

! NOTE

For information on the availability of front and rear floor mats for your Volkswagen, please see page 84.



01 Volkswagen Genuine "Premium" textile floor mats: The Volkswagen Genuine "Premium" textile floor mats are shaped to fit your vehicle's footwells perfectly and are made from hardwearing, thick woven velour. The front mats have vehicle lettering. The front mats are fixed in place using the attachment points in the floor area. The rear mats feature a wear-proof coating on the back to prevent them from slipping. Design may vary depending on the vehicle model.

02 Volkswagen Genuine "Optimat" textile floor mats: The Volkswagen Genuine "Optimat" textile floor mats combine the features of rubber floor mats with the elegance of textile floor mats. The U-shaped edge of these tailor-made textile floor mats safely retains dirt and moisture. The integrated fixing system and the anti-slip coating on the rear side prevent the mats from slipping. With model lettering on the front mats.

03 Volkswagen Genuine all-weather floor mats: Keeping the footwell clean all year round. This made-to-measure, durable floor mat set with vehicle lettering on the front mats not only keeps dirt and dampness away from the floor of your vehicle, but also reduces odours and is 100% recyclable. The front mats are attached to the vehicle floor using the integrated fastening system to prevent slipping.

04 "Plus" textile floor mats: The "Plus" textile floor mats are made from velour and fit perfectly into your vehicle's footwells with the Volkswagen attachment system. They feature a non-slip coating on the back, as well as robust impact protection in the heel area and a textile border.

05 "Plus" rubber floor mats: The made-to-measure "Plus" rubber floor mats are fixed in place with the Volkswagen- system screen system and provide excellent protection from moisture and dirt. The mats are non-slip, washable and very easy to clean.

01 Volkswagen Genuine door wind deflector: Enjoy the circulating fresh air, even when it is raining or snowing, or avoid the unpleasant build-up of heat on hot days by opening the windows slightly. These low-maintenance, carwash-resistant Volkswagen Genuine wind deflectors are made from high quality, recyclable acrylic glass. Colour: Smoke Grey.

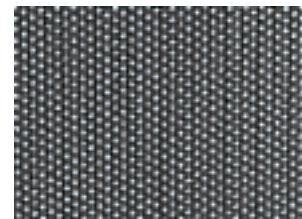
02 Volkswagen Genuine sunblind: There are some occasions when it is better for the sun to remain outside. For example, when your rear seat passengers include children or pets. The Volkswagen Genuine sunblind can be used as optimal sun protection, as well as for thermal insulation – without impairing traffic safety. It can be used when the windows are closed as well as when they are open.



01



02



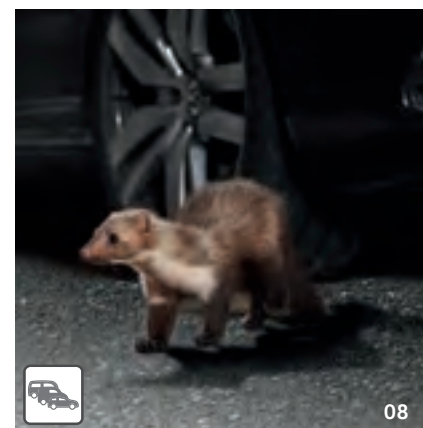
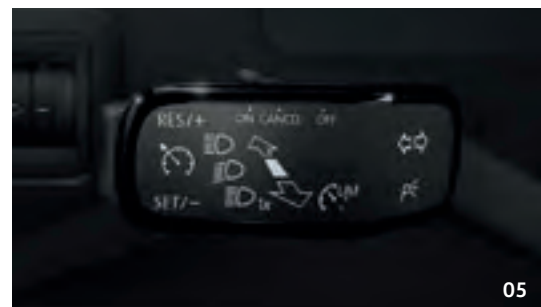
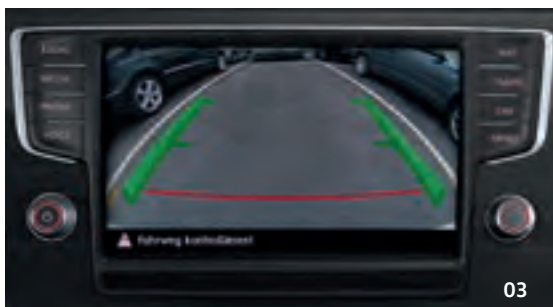
! NOTE

The sunblind's unique texture provides both optimum protection from the sun's rays and effective thermal insulation.

03 Volkswagen Genuine rear view camera¹: The Volkswagen Genuine rear view camera provides a realistic impression of what is behind the vehicle on the radio/navigation unit display, making reverse parking easier. Guide lines and the high-resolution display help the driver navigate precisely into the parking space.

04 Volkswagen Genuine Driver Alert System²: A steering wheel held rigidly. Excessive steering movements. These are the first signs of sustained driver fatigue. If multiple indicators occur soon after each other, the Driver Alert system recommends taking a break – thereby helping drivers to make the right decision at the right moment.

05 Volkswagen Genuine cruise control system³: At the touch of a button, you can maintain your speed and then automatically resume it after braking and/or changing gear using the reset function. The additional speed limiter function⁵ also allows you to define a top speed that cannot be exceeded, even when you put the pedal to the metal. Especially practical on long journeys or when travelling with a trailer.



06 Volkswagen Genuine driving profile selection: The Volkswagen Genuine driving profile selection allows the driver to individually adjust the steering (in "Sport" and "Individual" modes), engine map and gearbox control system, and automatically and permanently adapt them to the driving situation. The five settings, "Normal", "Eco", "Sport", "Comfort" and "Individual" can be selected at the press of a button. Additional vehicle functions can also be activated provided they are available in the vehicle. These include the cruise control system (Normal, Sport, Eco), dynamic cornering light (Normal, Sport, Eco), seat belt tensioner (Sport) and air conditioning (Eco). Only models with a cruise control system and/or automatic gearbox. Not suitable for vehicles with gas engines.

07 Volkswagen Genuine auxiliary heater⁴: No more tiresome ice scraping or freezing in your car in the early mornings. The Volkswagen Genuine auxiliary heater retrofit kit is fully integrated into the vehicle. All of the vehicle's display and control functions remain usable and they are still operated in the same way as described in your Volkswagen's handbook.

08 Marten deterrent: Small animals with a big impact. If martens chew on a vehicle's ignition cables or electric systems, they can leave it at risk of breaking down, leading to expensive repairs. With an effective marten deterrent, you can avoid all this in advance. Volkswagen Accessories offers a variety of effective solutions – from a preventive deterrent spray⁶ to electrical products. See the price list for an overview.

09 Auxiliary heater control dfreeze: dfreeze[®] is a "connected car" solution that allows you to control the auxiliary heater using a smartphone, regardless of how far you are from the vehicle. You can control the auxiliary heater from a smartphone app or tablet or PC web app which sends the signals via a server. The auxiliary heater can still be controlled using the existing and installed control elements (e.g. heating button, timer, remote control).

¹ Please note the camera's limited field of vision and the limits of the system. Please follow the vehicle's instruction manual precisely.
² The Driver Alert System is merely an assist system with system limits that do not release the driver from his own responsibility.

³ Gradients and slopes may affect the performance of the cruise control system. Please take system limits into account.
⁴ Only for Germany, only for stop/start systems with brake energy recuperation. Not suitable for vehicles with climate windscreen.
⁵ Model-dependent.
⁶ Use marten deterrent spray safely. Always read the label and product information before use.

Your children are always well protected when travelling.

Children need two things above all else: love and protection. We cater to both with our child seats. Volkswagen Genuine child seats have been specifically designed in loving detail to meet the challenges of the respective age group. As a result, your child benefits from tailored protection that exceeds the requirements of the ECE-R44/04 standard. What's more, the child seats offer a high level of comfort and simple handling, and come with easy-to-remove covers that can be washed at 30°C.



01 Volkswagen Genuine seat cover: Optimum protection for sensitive seats. The easy-to-clean, non-slip Volkswagen Genuine seat cover prevents dirt and wear, for example from child seats. Practical mesh pockets offer additional storage space. Can also be used with ISOFIX seats. Available in versions with short and long back sections.



02



03



04



05

02 Volkswagen Genuine G0 plus ISOFIX: High levels of protection and comfort for newborns and babies up to 13 kg or 15 months old. The ISOFIX fastening system ensures that the child seat and its base frame are securely fastened to the vehicle body. In vehicles without an ISOFIX system, the seat can be attached with any 3-point belt. The child is held securely in the seat with an adjustable 5-point safety harness. Additional features include an adjustable handle, an easily removable, washable fabric cover, an adjustable seat insert and a sun shade.

03 Volkswagen Genuine G1 ISOFIX DUO plus Top Tether: Maximum safety and comfort for children weighing between 9 and 18 kg (eight months to approx. four years old). The height of the belt harness can be adjusted. Furthermore, the sitting position can be adjusted in multiple ways. In addition to the tried-and-trusted locking system of an ISOFIX connection, in certain vehicles the seat can also be secured to special fasteners in the luggage compartment using the "Top Tether" connection – providing additional safety.

04/05 Volkswagen Genuine G2-3 ISOFIX: Children aged between three and twelve years (15 to 36 kg) can travel with protection and comfort with features such as height-adjustable sleep supports and options to adjust the height and inclination of the seat to suit the individual child. And with the removable back rest, the seat "grows" with them. The seat is attached using the vehicle's ISOFIX anchorage points. The child itself is buckled in using the 3-point seatbelt in the child seat.

Also available as a GTI option without a removable back rest.

06 Volkswagen Genuine additional interior mirror: Offers a better view and a careful eye on children travelling in the rear. The Volkswagen Genuine additional interior mirror is fixed to the windscreen or dash panel using a suction cup mount and can be adjusted to take in the interior, the traffic or the area around the car for parking with its flexible joint.

06





01 Volkswagen Genuine care and cleaning products: Our Volkswagen Genuine care and cleaning products have been developed to work ideally together both in and on the vehicle. Every product is ISO-certified and has also been tested and approved by Volkswagen's central laboratory. For long-term, effective vehicle care which protects both the material and the environment. Please see the price list for more detailed information about the individual products, as well as our seasonal care and cleaning sets.

02 Volkswagen Genuine first aid kit: This DIN standard first aid kit is an essential tool in the event of an accident. Meets the legal requirements of section 35h of the German Road Traffic Licensing Regulations and DIN 13 164.

03 Volkswagen Genuine warning triangle: The intelligently designed warning triangle has ECE test certification; it is stored in a space-saving manner and can be put to use easily and safely thanks to its swivelling metal foot.

04 Volkswagen Genuine safety vest: This fluorescent Volkswagen Genuine safety vest with Volkswagen lettering and reflective strips conforms with DIN EN 471. As of 1 July 2014, all drivers in Germany are required by law to carry a safety vest in their vehicle (with the exception of motorbikes and mobile homes); in other European countries, a safety vest must be carried for all vehicle occupants. A storage pouch is included. Colour: Orange.

05 Fuel canister: Long journey ahead and nowhere to refuel along the way? This 5-litre fuel canister helps you bridge the distance to the next service station. The canister comes with two filling tubes, one for diesel and one for petrol.

06 Volkswagen Genuine breakdown assistance safety package: The safety package contains a selection of products that may come in useful in the event of an emergency. All of the products in the set are supplied in a durable bag with two non-slip Velcro strips on the underside.



07



08



09



07 Volkswagen Genuine tyre bag set: Protect your wheels with these four robust Volkswagen Genuine tyre bags and wheel bolt bag. The bag is suitable for tyres and complete wheels up to 18 inches with a 245 mm tyre width and a 2100 mm tyre circumference. A larger bag for wheels up to 21 inches is also available.

08 Volkswagen Genuine valve caps: Customisation down to the smallest detail. These four Volkswagen Genuine valve caps are embossed with the Volkswagen logo and protect the valves from dust, dirt and moisture. Suitable for aluminium valves and rubber/metal valves. 1 set = 4 pieces.

09 Volkswagen Genuine wheel bolt locking set: Secure your alloy wheels effectively against theft with the Volkswagen Genuine wheel bolt locking set. Colour: Black. 1 set = 4 pieces.



10



11



10 Volkswagen Genuine Snox snow chain (powered by pewag): Volkswagen Genuine Snox snow chains are extremely easy to fit and run incredibly quietly. There are no hooks and eyes to connect or thread during installation, and manual re-tensioning, too, is a thing of the past. All external parts that make contact with the wheel are made from plastic to avoid causing scratches. The innovative Snox system controls the snow chain tension completely automatically. When the vehicle stops, the locks release. This means that the snow chain can be removed in any tyre position, a process made even simpler with the "Quick Release" function. A practical carry bag is included.

11 Volkswagen Genuine Servo SUV and Servo 9 snow chains (powered by pewag): The Volkswagen Genuine Servo SUV and Servo 9 snow chains ensure a secure grip on snowy roads. The high-quality stationary assembly chains can be fitted to and removed from the wheels quickly and easily. Automatic tensioning ratchets guarantee the best possible chain tensioning while driving – so manual re-tensioning is no longer necessary. All external parts that make contact with the wheel are made from plastic to avoid causing scratches. The reversible chains ensure a longer service life. The two snow chains differ due to the width of the chain links: they are 9 mm in the Servo 9 (Servo SUV: 13 mm), making them suited to the specific vehicle requirements for your Volkswagen.

Comfort and Protection

This overview shows the options available for the individual products in our Comfort and Protection range for our current vehicle models. Please contact your Volkswagen dealership for more information as to whether the options can be installed in your particular vehicle. Many of the products are available in different variants. See the price list for an overview of all available versions.



| | Page | Arteon | Beetle Beetle Cabriolet | Golf | Golf Estate | Golf Sportsvan | Jetta | Passat | Passat Estate | Polo | Scirocco | Sharan | T-Cross | T-Roc | Tiguan | Tiguan Allspace | Touareg | Touran | up! |
|--|----------|----------------|----------------------------|------------------|----------------|----------------|----------------|----------------|--------------------|-----------------|----------------|----------------|----------------|----------------|----------------|-----------------|----------------|----------------|----------------|
| | | f. MY. 2017 | f. MY. 2017 | f. MY. 2017 | f. MY. 2017 | f. MY. 2017 | f. MY. 2014 | f. MY. 2019 | f. MY. 2019 | f. MY. 2018 | f. MY. 2014 | f. MY. 2011 | f. MY. 2019 | f. MY. 2018 | f. MY. 2017 | f. MY. 2018 | f. MY. 2018 | f. MY. 2016 | f. MY. 2017 |
| LUGGAGE COMPARTMENT SYSTEMS | | | | | | | | | | | | | | | | | | | |
| Luggage compartment tray | | | | | | | | | | | | | | | | | | | |
| - With lettering | 64 | ○ | ○ | ○ | ○ | ○ | ○ | ○ | ○ | ○ | ○ | ● | ○ | ○ | ○ | ○ | ○ | ○ | ○ |
| - With lettering, for deep luggage compartment floors | Not ill. | ○ | ○ | ○ | ○ | ○ | ● | ○ | ○ | ○ | ● | ● | ● | ○ | ● | ○ | ○ | ○ | ○ |
| - With lettering, for variable luggage compartment floors | Not ill. | ● | ○ | ● ^{2,3} | ● ⁴ | ● | ○ | ● ⁹ | ● ^{10,11} | ● ¹³ | ○ | ○ | ● | ● | ● | ● | ● | ● | ○ |
| Luggage compartment liner | | | | | | | | | | | | | | | | | | | |
| - For low luggage compartment floor | 64 | ○ | ● | ○ | ○ | ○ | ● | ○ | ○ | ● ¹³ | ○ | ● | ● | ● | ● | ○ | ○ | ● | ● |
| - For variable luggage compartment floor | Not ill. | ● | ● | ● ^{2,3} | ● ⁴ | ● | ○ | ● ⁹ | ● ^{10,11} | ● ¹³ | ○ | ○ | ● | ● | ● | ○ | ○ | ● | ● |
| Luggage net | | | | | | | | | | | | | | | | | | | |
| | 65 | ● | ○ | ● ^{2,3} | ● ⁴ | ● | ● | ● ⁹ | ● ^{10,11} | ● ¹³ | ○ | ○ | ● | ● | ● | ● | ● | ● | ○ |
| Boot liner | | | | | | | | | | | | | | | | | | | |
| - Without partition elements | 65 | ○ | ○ | ○ | ● ⁴ | ● | ○ | ○ | ● ^{10,11} | ● ¹³ | ○ | ○ | ○ | ○ | ● | ○ | ○ | ● | ○ |
| - With partition elements | Not ill. | ○ | ○ | ● ^{2,3} | ○ | ○ | ○ | ○ | ○ | ○ | ○ | ● ¹ | ○ | ○ | ○ | ○ | ○ | ○ | ○ |
| Reversible floor covering with load sill protection | 65 | ○ | ○ | ● ^{2,3} | ● ⁴ | ○ | ○ | ○ | ● ^{10,11} | ○ | ○ | ○ | ● | ● | ● | ○ | ● | ● | ○ |
| Luggage compartment plug-in module | 66 | ○ | ○ | ● ^{2,3} | ● ⁴ | ● | ○ | ○ | ● ^{10,11} | ● ¹³ | ○ | ○ | ● | ● | ● | ● | ● | ○ | ○ |
| Net partition | 66 | ○ | ○ | ○ | ● | ● | ○ | ○ | ● ^{10,11} | ○ | ○ | ● | ○ | ○ | ● | ○ | ○ | ● | ○ |
| Partition | 66 | ○ | ○ | ○ | ○ | ○ | ○ | ○ | ○ | ○ | ○ | ● | ○ | ○ | ○ | ○ | ○ | ○ | ○ |
| COMFORT | | | | | | | | | | | | | | | | | | | |
| Espresso machine | 70 | | | | | | | | | | | | | | | | | | |
| | | | | | | | | | | | | | | | | | | | |
| Waste container | 70 | | | | | | | | | | | | | | | | | | |
| | | | | | | | | | | | | | | | | | | | |
| "Clean solution" waste bag | 71 | ● | ● | ● ^{2,3} | ● ⁴ | ● | ● | ● ⁹ | ● ^{10,11} | ● ¹³ | ● | ● | ● | ● | ● | ● | ● | ● | ○ |
| Cool and thermos box | 71 | | | | | | | | | | | | | | | | | | |
| | | | | | | | | | | | | | | | | | | | |

¹ With lid² Also for the Golf GTI and Golf GTD³ Also for the Golf GTE and e-Golf⁴ Also for the Golf Alltrack and Golf GTD Estate⁵ For all vehicles with headrest struts⁶ Can only be used if there is no passenger on the seat behind on the rear seat bench.⁷ Also for the Golf GTI⁸ Also for the Golf R⁹ Also for the Passat GTE¹⁰ Also for the Passat Alltrack¹¹ Also for the Passat GTE Estate¹² Only in conjunction with the Universal tablet holder¹³ Also for the Polo GTI¹⁴ See the price list for an overview of all available versions.

iPad/iPad Air/iPad mini are registered trademarks of Apple Computer International. Galaxy Tab is a registered trademark of Samsung Electronics Co., Ltd.

| | Page | Arteon | Beetle Beetle Cabriolet | Golf | Golf Estate | Golf Sportsvan | Jetta | Passat | Passat Estate | Polo | Scirocco | Sharan | T-Cross | T-Roc | Tiguan | Tiguan Allspace | Touareg | Touran | up! | |
|--|------|---|----------------------------|------------------|----------------|----------------|----------------|----------------|--------------------|-----------------|----------------|----------------|----------------|----------------|----------------|-----------------|----------------|----------------|----------------|--|
| | | f. MY. 2017 | f. MY. 2017 | f. MY. 2017 | f. MY. 2017 | f. MY. 2017 | f. MY. 2014 | f. MY. 2019 | f. MY. 2019 | f. MY. 2018 | f. MY. 2014 | f. MY. 2011 | f. MY. 2019 | f. MY. 2018 | f. MY. 2017 | f. MY. 2018 | f. MY. 2018 | f. MY. 2016 | f. MY. 2017 | |
| "Snakey" headrest hook, black (2 pieces) | 71 | ● | ● | ● ^{2,3} | ● ⁴ | ● | ● | ● ⁹ | ● ^{10,11} | ● ¹³ | ● | ● | ● | ● | ● | ● | ● | ● | ○ | |
| Clothes hanger ⁶ | 71 | ● | ● | ● ^{2,3} | ● ⁴ | ● | ● | ● ⁹ | ● ^{10,11} | ● ¹³ | ● | ● | ● | ● | ● | ● | ● | ● | ○ | |
| LED reading lamp | 71 | For any vehicle | | | | | | | | | | | | | | | | | | |
| Park Distance Control, rear | 73 | ○ | ● | ● ^{2,3} | ● ⁴ | ● | ● | ● ⁹ | ● ^{10,11} | ● ¹³ | ○ | ● | ○ | ● | ● | ● | ○ | ● | ● | |
| LED number plate light | 73 | ○ | ○ | ● ^{7,8} | ○ | ○ | ○ | ○ | ○ | ○ | ○ | ○ | ○ | ○ | ○ | ○ | ○ | ○ | ○ | |
| Rear view camera system, for retrofitting | 76 | ○ | ○ | ● ^{2,3} | ● ⁴ | ● | ○ | ○ | ○ | ○ | ○ | ○ | ○ | ○ | ○ | ○ | ○ | ○ | ○ | |
| Driver Alert system, for retrofitting | 76 | ○ | ○ | ● ^{2,3} | ● ⁴ | ● | ○ | ○ | ○ | ○ | ○ | ○ | ○ | ○ | ○ | ○ | ○ | ○ | ○ | |
| Cruise control system | 76 | Visit your Volkswagen Partner for more detailed information about our cruise control systems. | | | | | | | | | | | | | | | | | | |
| Driving profile selection, for retrofitting | 77 | ○ | ○ | ● ^{2,3} | ● ⁴ | ● | ○ | ○ | ○ | ○ | ○ | ○ | ○ | ○ | ○ | ○ | ○ | ○ | ○ | |
| Auxiliary heater | 77 | Visit your Volkswagen dealership for more detailed information about our auxiliary heaters. | | | | | | | | | | | | | | | | | | |
| dfreeze auxiliary heater controller | 77 | ● | ○ | ● ^{2,3} | ● ⁴ | ● | ● | ● ⁹ | ● ^{10,11} | ● ¹³ | ○ | ● | ○ | ● | ● | ● | ○ | ● | ○ | |
| Modular Travel & Convenience System⁵ | | | | | | | | | | | | | | | | | | | | |
| - Base module | 68 | Can be used in any vehicles with headrest struts. Not for module seats. | | | | | | | | | | | | | | | | | | |
| - iPad 2-4 tablet holder | 68 | Can be used in any vehicles with headrest struts. Not for module seats. | | | | | | | | | | | | | | | | | | |
| - iPad Air 1-2 tablet holder | 68 | Can be used in any vehicles with headrest struts. Not for module seats. | | | | | | | | | | | | | | | | | | |
| - iPad mini tablet holder | 68 | Can be used in any vehicles with headrest struts. Not for module seats. | | | | | | | | | | | | | | | | | | |
| - Samsung Galaxy Tab 3/4 10.1 tablet holder | 68 | Can be used in any vehicles with headrest struts. Not for module seats. | | | | | | | | | | | | | | | | | | |
| - Action camera holder | 68 | Can be used in any vehicles with headrest struts. Not for module seats. | | | | | | | | | | | | | | | | | | |
| - Universal tablet holder | 68 | Can be used in any vehicles with headrest struts. Not for module seats. | | | | | | | | | | | | | | | | | | |
| - Folding table and cup holder | 68 | Can be used in any vehicles with headrest struts. Not for module seats. | | | | | | | | | | | | | | | | | | |
| - Clothes hanger ⁶ | 68 | Can be used in any vehicles with headrest struts. Not for module seats. | | | | | | | | | | | | | | | | | | |
| - Bag hook | 68 | Can be used in any vehicles with headrest struts. Not for module seats. | | | | | | | | | | | | | | | | | | |
| Safety cases, for attaching to the universal tablet holder¹² | | | | | | | | | | | | | | | | | | | | |
| - Safety case for iPad Mini 4 | 68 | Can be used in any vehicles with headrest struts. Not for module seats. | | | | | | | | | | | | | | | | | | |
| - Safety case for Samsung Galaxy | 68 | Can be used in any vehicles with headrest struts. Not for module seats. | | | | | | | | | | | | | | | | | | |
| - Safety case for iPad Air 2 | 68 | Can be used in any vehicles with headrest struts. Not for module seats. | | | | | | | | | | | | | | | | | | |

| | Page | Arteon | Beetle Beetle Cabriolet | Golf | Golf Estate | Golf Sportsvan | Jetta | Passat | Passat Estate | Polo | Scirocco | Sharan | T-Cross | T-Roc | Tiguan | Tiguan Allspace | Touareg | Touran | up! |
|--|----------|-----------------|----------------------------|------------------|----------------|----------------|----------------|----------------|-----------------|-----------------|----------------|----------------|----------------|----------------|----------------|-----------------|----------------|----------------|----------------|
| | | f. MY. 2017 | f. MY. 2017 | f. MY. 2017 | f. MY. 2017 | f. MY. 2017 | f. MY. 2014 | f. MY. 2019 | f. MY. 2019 | f. MY. 2018 | f. MY. 2014 | f. MY. 2011 | f. MY. 2019 | f. MY. 2018 | f. MY. 2017 | f. MY. 2018 | f. MY. 2018 | f. MY. 2016 | f. MY. 2017 |
| PROTECTION | | | | | | | | | | | | | | | | | | | |
| Load sill protection film, transparent | 72 | ● | ● | ● ^{2,3} | ● ⁴ | ● | ● | ● ⁸ | ● ¹⁰ | ● ¹³ | ○ | ● | ● | ● | ● | ● | ● | ● | ● |
| Sill panel trim film | | | | | | | | | | | | | | | | | | | |
| - Black/Silver | 72 | ● | ○ | ● ¹ | ● ² | ● | ● | ● ⁸ | ● ¹⁰ | ● ¹³ | ● | ● | ● | ● | ● | ● | ○ | ● | ● |
| - Transparent, front | 72 | ○ | ● | ○ | ○ | ○ | ○ | ○ | ○ | ○ | ○ | ○ | ○ | ○ | ○ | ○ | ○ | ○ | ○ |
| - Transparent, rear | 72 | ○ | ○ | ● ¹ | ● ² | ● | ○ | ● ⁸ | ● ¹⁰ | ● ¹³ | ○ | ○ | ○ | ● | ● | ● | ○ | ○ | ○ |
| - Transparent, front and rear | 72 | ○ | ○ | ○ | ○ | ○ | ● | ○ | ○ | ○ | ○ | ○ | ○ | ○ | ○ | ○ | ○ | ○ | ○ |
| Mudflaps | 73 | ● | ● | ● ^{2,3} | ● ⁴ | ● | ● | ● ⁸ | ● ¹⁰ | ● ¹³ | ● | ● | ● | ● | ● | ● | ● | ● | ● |
| "Premium" textile floor mats | 75 | ○ | ● | ● ² | ● ⁴ | ● | ● | ● | ● ¹⁰ | ● ¹³ | ● | ● | ● | ● | ● | ● | ● | ● | ● |
| "Optimat" textile floor mats | 75 | ○ | ○ | ● ² | ● ⁴ | ● | ○ | ● | ● ¹⁰ | ● ¹³ | ● | ○ | ● | ● | ● | ○ | ○ | ● | ● |
| All-weather floor mats | 75 | ● | ● | ● ² | ● ⁴ | ● | ● | ● | ● ¹⁰ | ● ¹³ | ● | ● | ● | ● | ● | ● | ● | ● | ● |
| GTI all-weather floor mats | Not ill. | ○ | ○ | ● ² | ● ⁴ | ○ | ○ | ○ | ○ | ○ | ○ | ○ | ○ | ○ | ○ | ○ | ○ | ○ | ○ |
| "Plus" textile floor mats | 75 | ● | ● | ● ² | ● ⁴ | ● | ● | ● | ● ¹⁰ | ● ¹³ | ● | ● | ● | ● | ● | ○ | ○ | ● | ● |
| "Plus" rubber floor mats | 75 | ● | ● | ● ² | ● ⁴ | ● | ● | ● | ● ¹⁰ | ● ¹³ | ● | ● | ● | ● | ○ | ○ | ○ | ● | ● |
| Door wind deflector | 76 | ○ | ○ | ● ^{7,8} | ● ⁴ | ● | ● | ● | ● ¹⁰ | ● ¹³ | ○ | ● | ● | ● | ● | ● | ○ | ● | ○ |
| Sunblind | 76 | ○ | ○ | ● ¹ | ● ² | ● | ○ | ○ | ● ¹⁰ | ● ¹³ | ○ | ● | ○ | ○ | ● | ● | ○ | ● | ● |
| Marten deterrent ¹⁴ | 77 | For any vehicle | | | | | | | | | | | | | | | | | |
| CHILD SEATS AND ACCESSORIES | | | | | | | | | | | | | | | | | | | |
| Seat cover | 78 | For any vehicle | | | | | | | | | | | | | | | | | |
| G0 plus | Not ill. | For any vehicle | | | | | | | | | | | | | | | | | |
| G0 plus ISOFIX | 79 | For any vehicle | | | | | | | | | | | | | | | | | |
| G1 ISOFIX DUO plus Top Tether | 79 | For any vehicle | | | | | | | | | | | | | | | | | |
| G2-3 ISOFIT, with removable backrest | 79 | For any vehicle | | | | | | | | | | | | | | | | | |
| G2-3 ISOFIT GTI design, without removable back rest | 79 | For any vehicle | | | | | | | | | | | | | | | | | |
| Additional interior rear view mirror | 79 | For any vehicle | | | | | | | | | | | | | | | | | |

¹ With lid² Also for the Golf GTI and Golf GTD³ Also for the Golf GTE and e-Golf⁴ Also for the Golf Alltrack and Golf GTD Estate⁵ For all vehicles with headrest struts⁶ Can only be used if there is no passenger on the seat behind on the rear seat bench.⁷ Also for the Golf GTI⁸ Also for the Golf R⁹ Also for the Passat GTE¹⁰ Also for the Passat Alltrack¹¹ Also for the Passat GTE Estate¹² Only in conjunction with the Universal tablet holder¹³ Also for the Polo GTI¹⁴ See the price list for an overview of all available versions.

iPad/iPad Air/iPad mini are registered trademarks of Apple Computer International. Galaxy Tab is a registered trademark of Samsung Electronics Co., Ltd.

| | Page | Arteon | Beetle Beetle Cabriolet | Golf | Golf Estate | Golf Sportsvan | Jetta | Passat | Passat Estate | Polo | Scirocco | Sharan | T-Cross | T-Roc | Tiguan | Tiguan Allspace | Touareg | Touran | up! | |
|--|----------|--|----------------------------|----------------|----------------|----------------|----------------|----------------|----------------|-----------------|----------------|----------------|----------------|----------------|----------------|-----------------|----------------|----------------|----------------|---|
| | | f. MY. 2017 | f. MY. 2017 | f. MY. 2017 | f. MY. 2017 | f. MY. 2017 | f. MY. 2014 | f. MY. 2019 | f. MY. 2019 | f. MY. 2018 | f. MY. 2014 | f. MY. 2011 | f. MY. 2019 | f. MY. 2018 | f. MY. 2017 | f. MY. 2018 | f. MY. 2018 | f. MY. 2016 | f. MY. 2017 | |
| SERVICE | | | | | | | | | | | | | | | | | | | | |
| First aid kit | 80 | | | | | | | | | For any vehicle | | | | | | | | | | |
| Warning triangle | 80 | | | | | | | | | For any vehicle | | | | | | | | | | |
| Safety vest, colour: Orange | 80 | | | | | | | | | For any vehicle | | | | | | | | | | |
| Fuel canister | 80 | | | | | | | | | For any vehicle | | | | | | | | | | |
| Breakdown assistance safety package | 80 | | | | | | | | | For any vehicle | | | | | | | | | | |
| Emergency hammer | Not ill. | | | | | | | | | For any vehicle | | | | | | | | | | |
| Fire extinguisher | Not ill. | | | | | | | | | For any vehicle | | | | | | | | | | |
| Ice scraper | Not ill. | | | | | | | | | For any vehicle | | | | | | | | | | |
| Care and cleaning products ¹⁴ | 80 | | | | | | | | | For any vehicle | | | | | | | | | | |
| ACCESSORIES FOR WHEELS AND TYRES | | | | | | | | | | | | | | | | | | | | |
| Dynamic hub caps | 18 | Use of the dynamic wheel trim depends on the wheel. Please ask your Volkswagen dealership. | | | | | | | | | | | | | | | | | | |
| Tyre bag set | 81 | For any vehicle | | | | | | | | | | | | | | | | | | |
| Valve cap sets | | | | | | | | | | | | | | | | | | | | |
| - For aluminium valves | 81 | For any vehicle | | | | | | | | | | | | | | | | | | |
| - For rubber/metal valves | 81 | For any vehicle | | | | | | | | | | | | | | | | | | |
| Wheel bolt locking set | 81 | For any vehicle | | | | | | | | | | | | | | | | | | |
| Snox snow chain (powered by pewag) | 81 | ○ | ● | ● ² | ● ⁴ | ● | ● | ● | ● | ○ | ● | ● | ○ | ○ | ○ | ○ | ○ | ● | ● | |
| Servo SUV snow chain (powered by pewag) | 81 | ○ | ○ | ○ | ○ | ○ | ○ | ○ | ○ | ○ | ○ | ○ | ○ | ○ | ○ | ● | ● | ● | ○ | ○ |
| Servo 9 snow chain (powered by pewag) | 81 | ● | ○ | ○ | ○ | ○ | ○ | ● | ● | ● ¹³ | ○ | ○ | ● | ● | ○ | ○ | ○ | ○ | ○ | ○ |



Mobile and flexible.

Online all the time.

Experience the entire world of Volkswagen Accessories online – whenever and wherever you like. Find out about our products, hear the latest news first via social media, or surf with ease in our world of accessories. Have fun!



YouTube – the official Volkswagen channel with a vast range of fun and informative videos, covering both your Volkswagen and the Genuine Accessories range. [youtube.de/myvolkswagen](https://www.youtube.de/myvolkswagen)



We keep in contact and show you what we like. News, opinions, photos, videos, friends, fans. facebook.com/VolkswagenDE



Visit our website at volkswagen.de



! NOTE

All catalogues can be found at your trusted Volkswagen dealership. Or online at: volkswagen.de

Full Accessories Catalogue

For Passenger Cars

Volkswagen Zubehör GmbH · Dreieich · volkswagen.de

V07 5002 9000 · Printed in Germany

Subject to change and errors · November 2019

The offers with regard to scope of delivery, appearance, performance, dimensions, weights and illustrations as well as all information regarding fittings and technical data is based on the characteristics of the German market and corresponds to the knowledge available at the time of printing. We reserve the right to make changes to the scope of delivery, design and colour without advance notification within the context of further development.

Your Volkswagen dealership